

Library and Knowledge Services

Papworth.library@nhs.net

Medical Students Resources Guide

[Books](#)

[Databases](#)

[Services](#)

[Library account](#)

[Library website](#)



Databases

BMJ Best Practice draws on the latest evidence based research to offer step-by-step UK guidance on diagnosis, prognosis, treatment and prevention. It also features procedural videos, calculators, drug information and leaflets for patients. Click [here](#) to access.

BMJ Best Practice

ClinicalKey is a search tool designed to provide answers to clinical questions. It includes journals, books, practice guidelines, patient education, drug information and MEDLINE citations and abstracts. Click [here](#) to search using [ClinicalKey](#).



UpToDate®

UpToDate is an online information resource that synthesises the most recent healthcare information into verifiable, evidence-based recommendations. To access from within Royal Papworth Hospital [click here](#). To access from outside the hospital site, login with an OpenAthens account: www.uptodate.com



Biology for the Medical Sciences



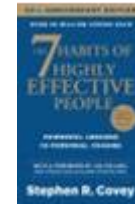
Oxford Handbook of Clinical Diagnosis



Oxford Handbook for the Foundation Programme



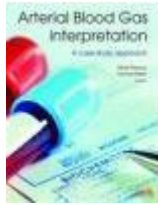
The Cardiovascular System at a Glance



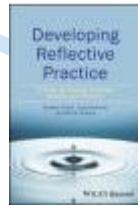
The 7 Habits of Highly Effective People



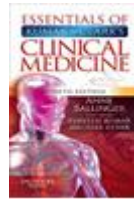
Egan's Fundamentals of Respiratory Care



Arterial Blood Gas Interpretation: A Case Study Approach



Developing Reflective Practice: A Guide for Medical Students, Doctors and Teachers



Essentials of Kumar and Clark's Clinical Medicine



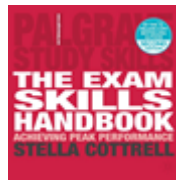
Medicine at a Glance & Medicine at a Glance – Core Cases



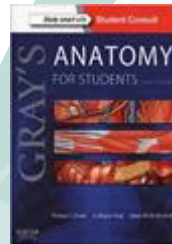
Text and Atlas of Wound Diagnosis and Treatment



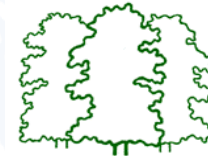
Medical and Surgical Emergencies For Students and Junior Doctors



The Exam Skills Handbook



Gray's Anatomy for Students (also eBook)



Register to become a library member to borrow books and access the library 24/7. Complete the [online registration form](#) on the Library's website.

To search for books go to the library catalogue [Elms](#). You can place holds or request a book there too.

E-Books

There are also a large number of E-Books available to you through Clinical Key.

Services



KnowledgeShare

[Click here](#) to register to keep up to date with the latest evidence in your subject area.



Book and Article Requests

If you have difficulty finding a book or article, you can request it by logging into your [Elms](#) account and completing the form under Make a Request.



Follow us on Twitter for the latest cardiothoracic health information
[@RoyalPapLib](#)

Training

We run a range of training sessions to support your professional development, including OpenAthens and literature search skills. Just fill in the [online booking form](#).