



**Royal Papworth Hospital**  
NHS Foundation Trust

# Easy Read

## Getting ready for your stay in hospital

A Patient's Guide



## Welcome to Royal Papworth Hospital

- We want to make sure you are as comfortable as possible when you stay in hospital



## What time to get here and where to go

You should have a letter that gives you details, it says:

- What day and what time to come



- The name of the ward to go to



- The name of your doctor



- Anything special you need to do, like not eating or drinking before you come to hospital



- Anything you need to do about the drugs you might be taking



## On the day

Please follow what it says on the letter

If you are not well or cannot come, please call us to let us know as soon as possible



## Staying with us

Our wards have separate bedrooms with en-suite toilets



Each day we will talk to you about the care you are getting and details about when you might leave



If you have any questions please ask a member of staff on your ward



## What to bring with you

You will need:

- Pyjamas, dressing gown and slippers
- Toothbrush, toothpaste and anything else you use to keep yourself clean





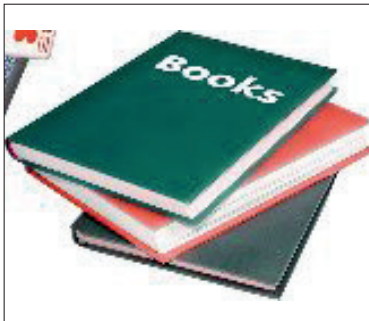
- **Your own clothes**



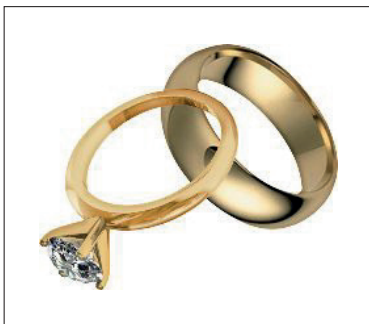
- **Any mobility aids you have**



- **Money for phone calls and newspapers  
(ask us if you can use a mobile)**



- **Things to pass the time, like books**



- **Don't bring anything valuable, we can't replace anything that is  
lost or stolen**



## Medicines to bring

Please bring:

- All your medicines
- Any repeat prescriptions you have



Please tell us about all the medicines you use.

This includes:

- Inhalers
- Injections



- Creams



- Patches



Let us know if you have any questions about your medicines



## How to get to hospital

You can park in Multi-storey Car Park 2 which is next to the hospital. There are disabled spaces on levels 1-4 of the car park. There are also some car park spaces outside the hospital where someone can drop you off or pick you up.



You can park at Trumpington Park & Ride or Babraham Park & Ride and take the bus to the hospital.

There are lots of other buses you can take to the Addenbrooke's Hospital bus stop, which is a 10-minute walk to Royal Papworth Hospital.



You may be entitled to get help from the hospital with your travel costs.

Please phone: 01223 638276



## PALS (Patient Advice and Liaison Service)

PALS can help with information, advice and support

They will listen to ideas you have about care or any complaints



Telephone: 01223 638896 or 01223 638963



Email: [papworth.pals@nhs.uk](mailto:papworth.pals@nhs.uk)





## Need someone to talk to?

Please call the chaplain on: 01223 639121



## Wi-fi and mobile phones

Please ask the staff on the ward about free wi-fi and using a mobile



Royal Papworth Hospital is a smoke-free site

For help to give up smoking ask your GP or call the helpline on:  
0300 123 1044

**Royal Papworth Hospital NHS Foundation Trust**  
Papworth Road  
Cambridge Biomedical Campus  
Cambridge  
CB2 0AY

Tel: 01223 638000

[www.royalpapworth.nhs.uk](http://www.royalpapworth.nhs.uk)

A member of Cambridge University Health Partners

Author ID: Clinical Education Facilitator  
Specialist Department: Education  
Printed: February 2019  
Review Date: February 2021  
Version: 2  
Leaflet Number: PI 186

Large print copies and  
alternative language  
versions of this leaflet  
can be made available  
on request.