

Quarterly Quality Report

Royal Papworth Hospital, Critical Care Unit

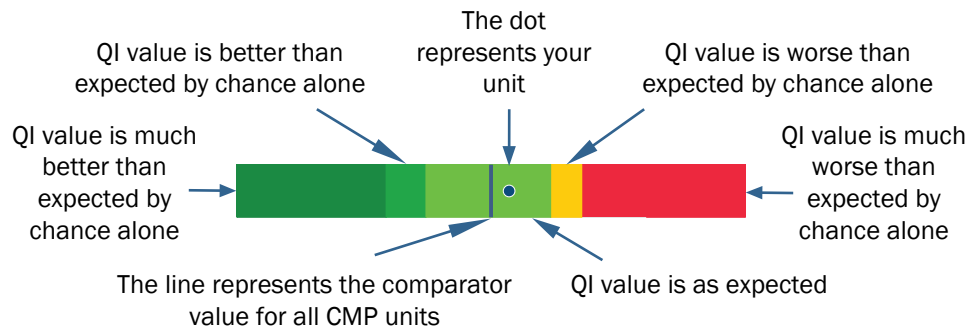
1 April 2018 to 31 March 2019

(N=2,588)

Understanding your report

Quality indicator dashboard page

The Case Mix Programme (CMP) Quality indicator (QI) dashboard summarises the results for each QI for a single adult, critical care unit.



The comparator value

For the QIs High-risk admissions from the ward, High-risk sepsis admissions from the ward, Unit-acquired infections in blood, Out-of-hours discharges to the ward (not delayed), Discharges direct to home, Non-clinical transfers to another unit and Unplanned readmissions within 48 hours, the comparator value is the overall percentage for all CMP units for the time period of the report.

For the QIs Risk-adjusted acute hospital mortality and Risk-adjusted acute hospital mortality - predicted risk < 20%, the comparator value is one (1.0), where the observed acute hospital mortality is equal to that expected from the ICNARC_{H-2018} model.

Similar units

In this report, similar units are other specialist cardiothoracic critical care units.

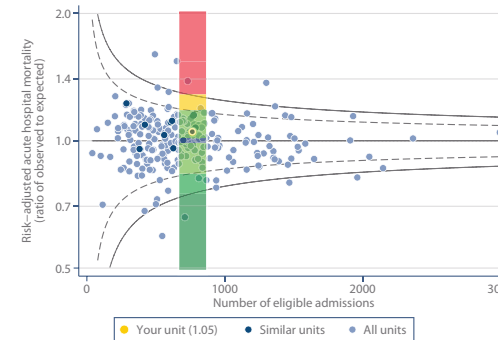
For more information regarding the QQR, please visit the [ICNARC QQR webpage](#).

Quality indicator pages

Each QI has its own page and is presented as a funnel plot with a definition, a quarterly results table and a trend graph.

The grey lines in the funnel plot represent the control limits at two standard deviations (dashed) and three standard deviations (solid) from the comparator value. The control limits become narrower as the sample size increases - as larger sample sizes provide a more accurate estimate. Your unit is highlighted in orange.

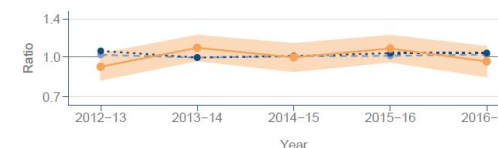
[Please note that the QIs Bed days of care post 8-hour delay and post 24-hour delay are not displayed as funnel plots]



| | Eligible | Numerator | Denominator | Result | |
|-------------------|----------|-----------|-------------|-------------------|--------|
| Quarter 1 [N=222] | 212 | 38 | 39.2 | 0.97 | Green |
| Quarter 2 [N=252] | 244 | 41 | 48.3 | 0.85 | Red |
| Quarter 3 [N=237] | 224 | 46 | 42.3 | 1.09 | Yellow |
| Quarter 4 [N=224] | 215 | 46 | 48.2 | 0.95 | Green |
| Full year [N=935] | 895 | 171 | 178.1 | 0.98 (0.84, 1.10) | Green |

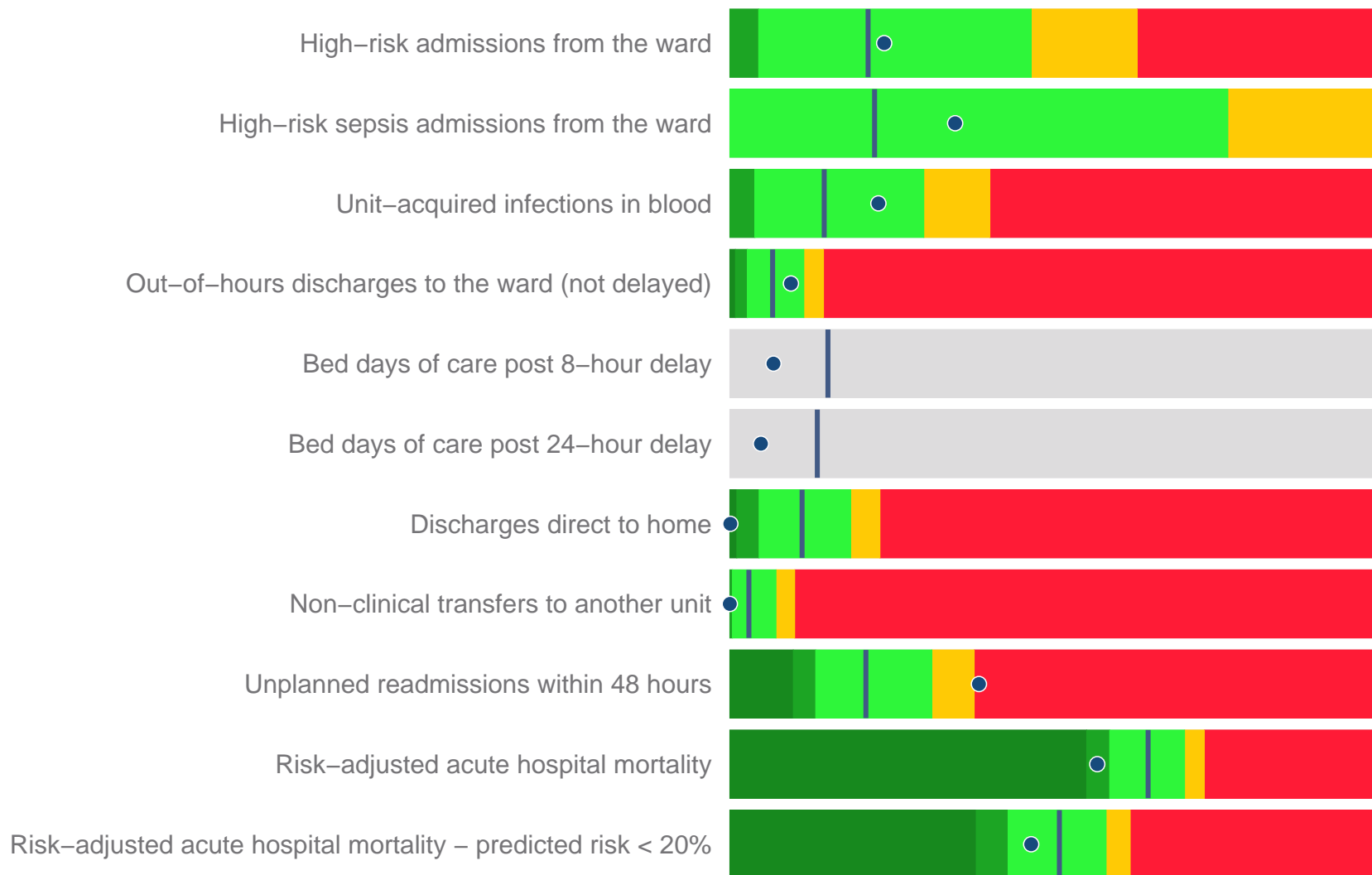
This funnel plot has been overlaid by the quality indicator dashboard to illustrate how the two relate to each other.

The traffic light colours in the quarterly results table correspond to the control limits on the funnel plot and to the colours used in the dashboard. In addition, the 95% confidence interval for your unit's value is presented for the full year (in brackets).

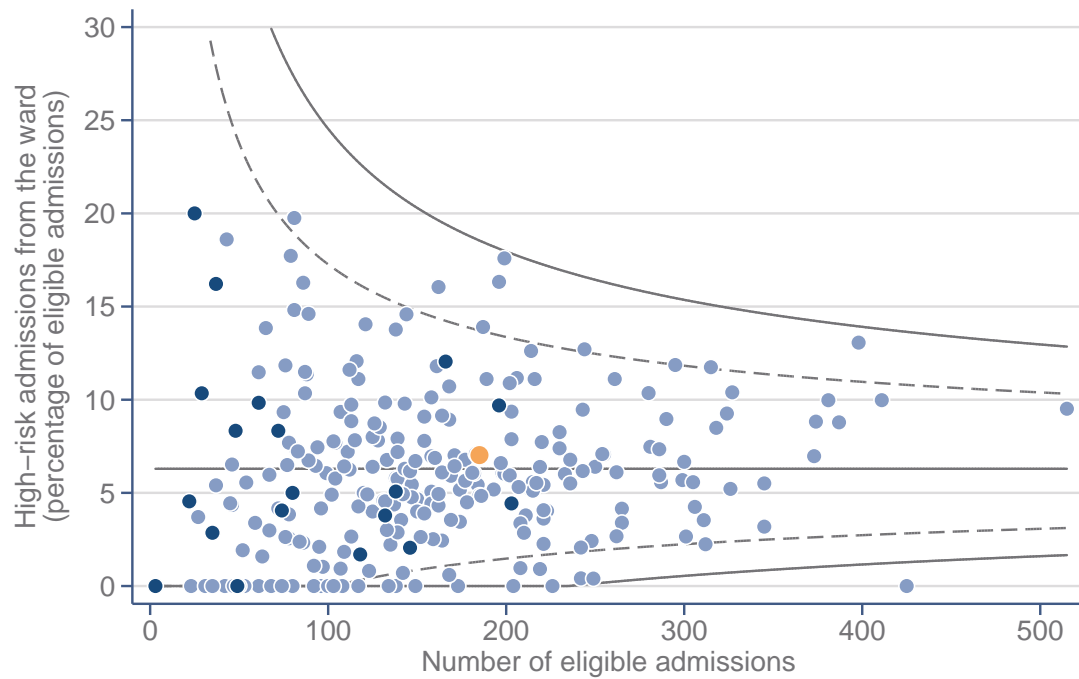


The orange shaded area around your unit's value in the trend graph is the 95% confidence interval for your unit.

Quality indicator dashboard



High-risk admissions from the ward



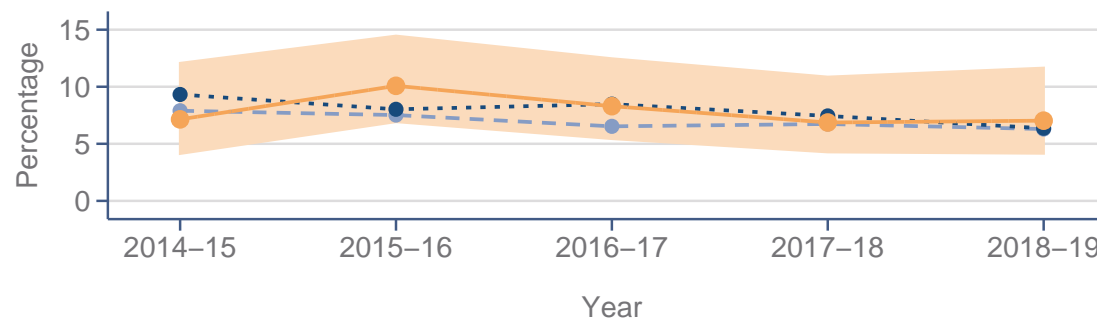
© ICNARC 2019



Definition

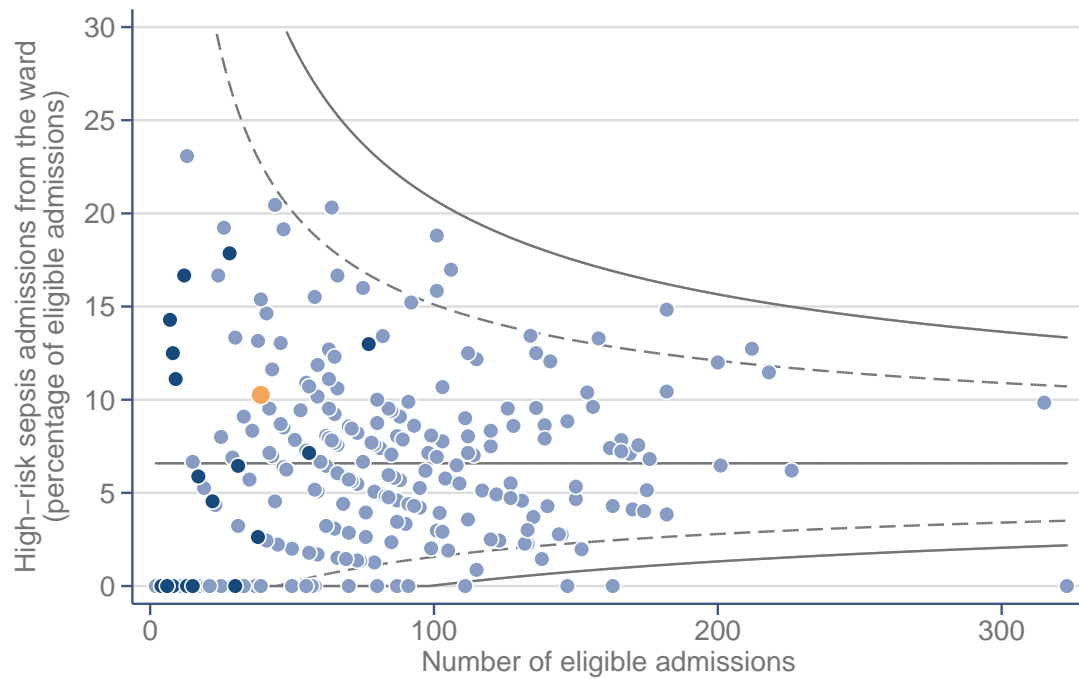
- Eligible: Critical care unit admissions from a ward (or intermediate care or obstetric area) in the same hospital
- Numerator: Number of eligible admissions with four or more organ dysfunctions (SOFA ≥ 2 per organ) during the first 24 hours following admission
- Denominator: Number of eligible admissions

| | Eligible | Numerator | Denominator | Result | |
|-----------------------|----------|-----------|-------------|-----------------------|--------------------------------------|
| Quarter 1 [N=666] | 42 | 1 | 42 | 2.4% | ■ |
| Quarter 2 [N=712] | 58 | 3 | 58 | 5.2% | ■ |
| Quarter 3 [N=638] | 44 | 3 | 44 | 6.8% | ■ |
| Quarter 4 [N=572] | 41 | 6 | 41 | 14.6% | ■ |
| Full year [N=2588] | 185 | 13 | 185 | 7.0% (4.2%, 11.7%) | ■ |



© ICNARC 2019

High-risk sepsis admissions from the ward



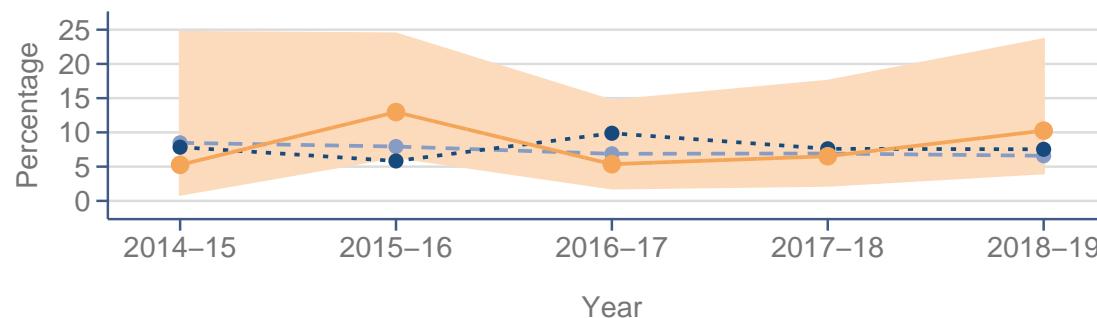
© ICNARC 2019

● Your unit (10.3%) ● Similar units (7.8%) ● All units (6.6%)

| | Eligible | Numerator | Denominator | Result | |
|-----------------------|----------|-----------|-------------|------------------------|---|
| Quarter 1 [N=666] | 10 | 1 | 10 | 10.0% | ■ |
| Quarter 2 [N=712] | 10 | 3 | 10 | 30.0% | ■ |
| Quarter 3 [N=638] | 10 | 0 | 10 | 0.0% | ■ |
| Quarter 4 [N=572] | 9 | 0 | 9 | 0.0% | ■ |
| Full year [N=2588] | 39 | 4 | 39 | 10.3% (4.1%, 23.6%) | ■ |

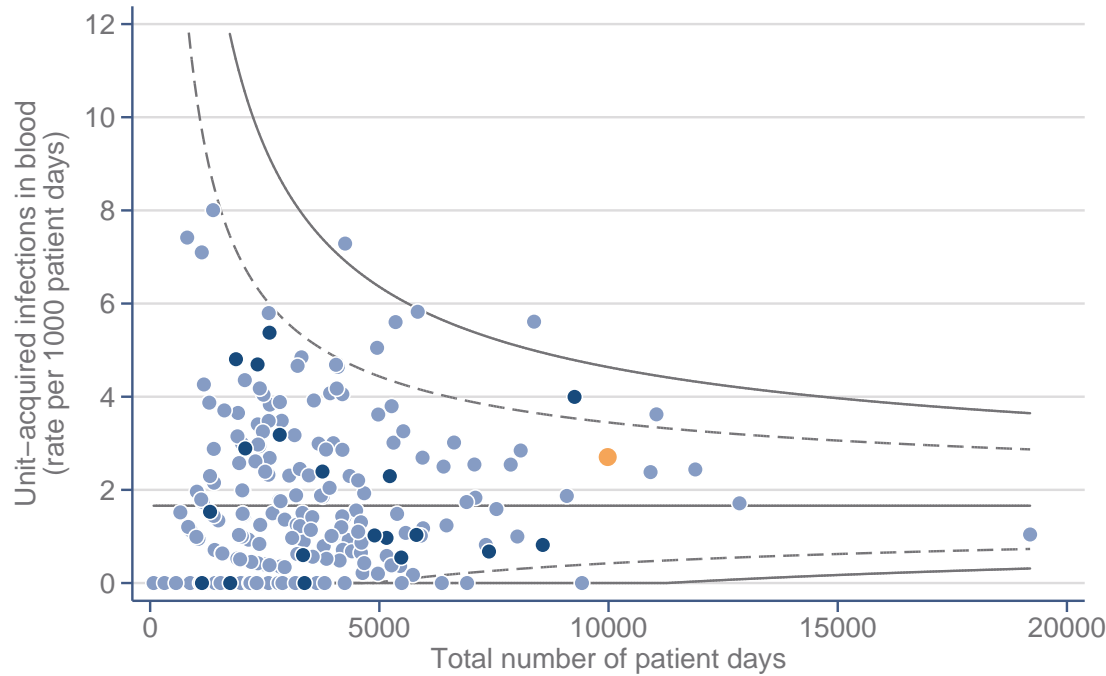
Definition

- Eligible: Critical care unit admissions with infection from a ward (or intermediate care or obstetric area) in the same hospital
- Numerator: Number of eligible admissions with four or more organ dysfunctions (SOFA ≥ 2 per organ) during the first 24 hours following admission
- Denominator: Number of eligible admissions



© ICNARC 2019

Unit-acquired infections in blood



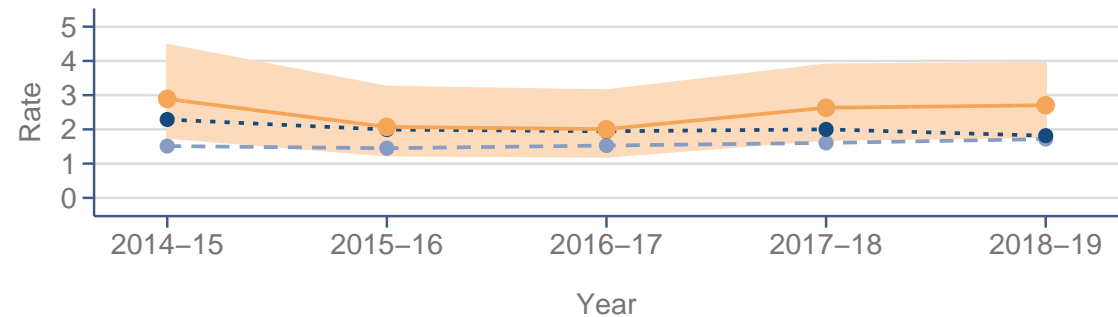
| | Eligible | Numerator | Denominator | Result | |
|-----------------------|----------|-----------|-------------|----------------|--------------------------------------|
| Quarter 1 [N=666] | 258 | 9 | 2498 | 3.6 | ■ |
| Quarter 2 [N=712] | 267 | 1 | 2407 | 0.4 | ■ |
| Quarter 3 [N=638] | 248 | 10 | 2499 | 4.0 | ■ |
| Quarter 4 [N=572] | 239 | 7 | 2578 | 2.7 | ■ |
| Full year [N=2588] | 1012 | 27 | 9982 | 2.7 (1.8, 3.9) | ■ |

© ICNARC 2019

● Your unit (2.7)
 ● Similar units (1.9)
 ● All units (1.7)

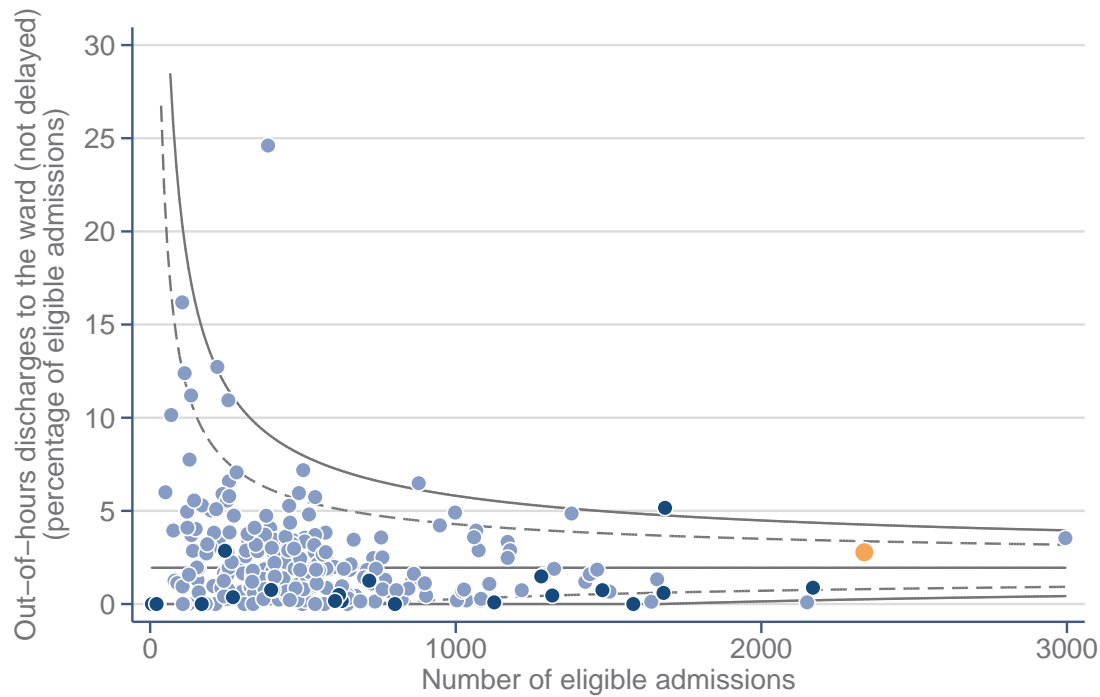
Definition

- Eligible: Critical care unit admissions staying at least 48 hours
- Numerator: Number of unit-acquired infections in blood, defined as the presence of infection in any blood sample taken for microbiological culture after 48 hours following admission
- Denominator: Total number of patient days that eligible admissions stayed in the critical care unit



© ICNARC 2019

Out-of-hours discharges to the ward (not delayed)



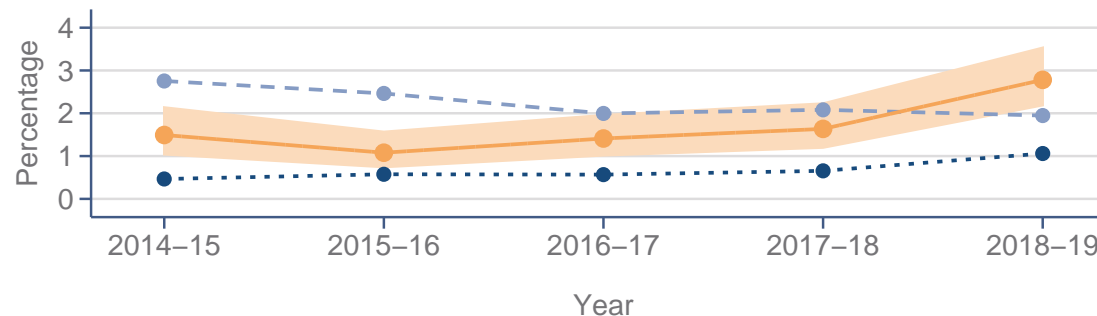
| | Eligible | Numerator | Denominator | Result | |
|-----------------------|----------|-----------|-------------|----------------------|---------------------------------------|
| Quarter 1 [N=666] | 604 | 17 | 604 | 2.8% | ■ |
| Quarter 2 [N=712] | 657 | 18 | 657 | 2.7% | ■ |
| Quarter 3 [N=638] | 571 | 13 | 571 | 2.3% | ■ |
| Quarter 4 [N=572] | 505 | 17 | 505 | 3.4% | ■ |
| Full year [N=2588] | 2337 | 65 | 2337 | 2.8% (2.2%, 3.5%) | ■ |

© ICNARC 2019



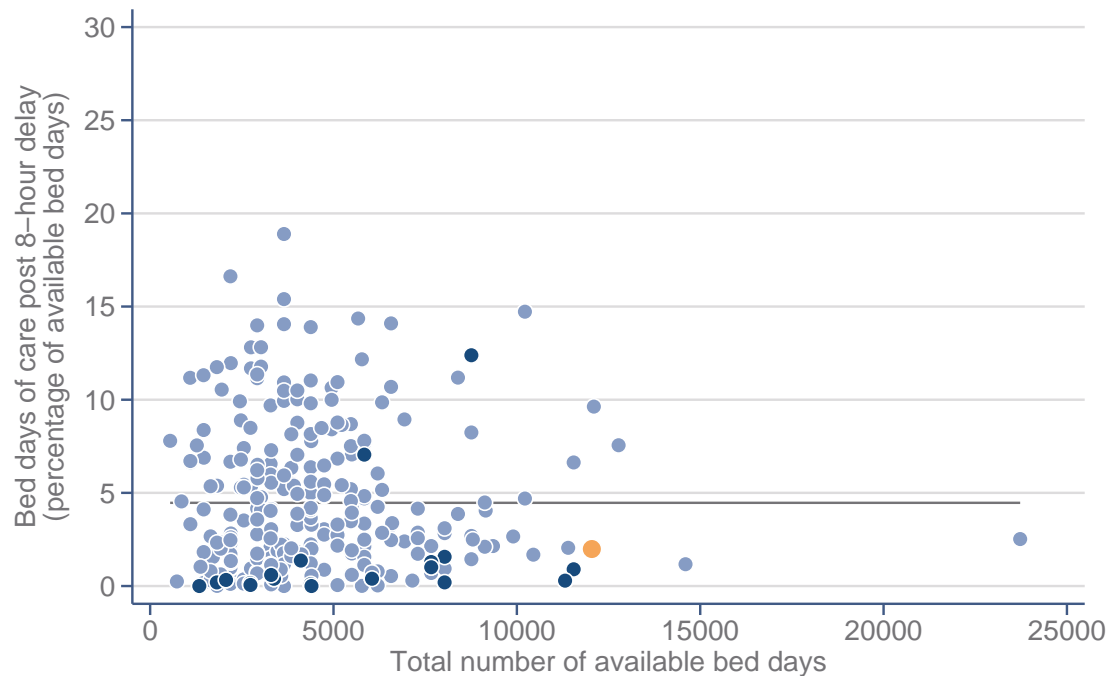
Definition

- Eligible: Critical care unit survivors discharged to a ward in the same hospital
- Numerator: Number of eligible admissions discharged between 22:00 and 06:59 and not delayed (i.e. not declared fully ready for discharge by 18:00 on that day)
- Denominator: Number of eligible admissions



© ICNARC 2019

Bed days of care post 8-hour delay



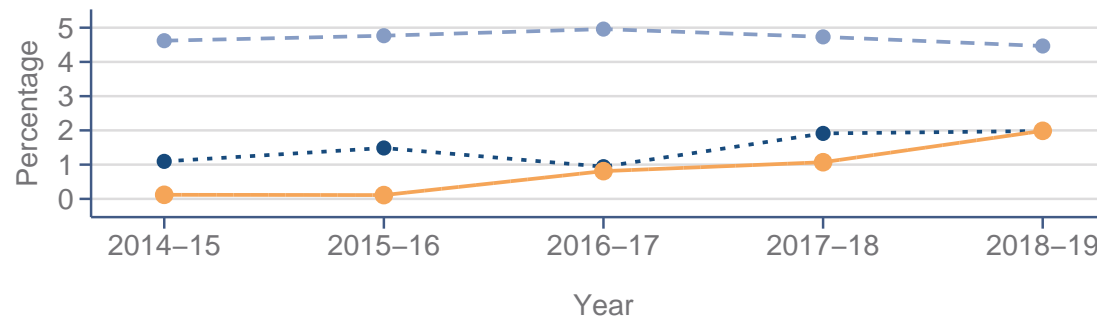
© ICNARC 2019



| | Eligible | Numerator | Denominator | Result |
|-----------------------|----------|-----------|-------------|--------|
| Quarter 1 [N=666] | 604 | 31.7 | 3003 | 1.1% |
| Quarter 2 [N=712] | 658 | 60.3 | 3036 | 2.0% |
| Quarter 3 [N=638] | 571 | 62.6 | 3036 | 2.1% |
| Quarter 4 [N=572] | 505 | 84.7 | 2970 | 2.9% |
| Full year [N=2588] | 2338 | 239.4 | 12045 | 2.0% |

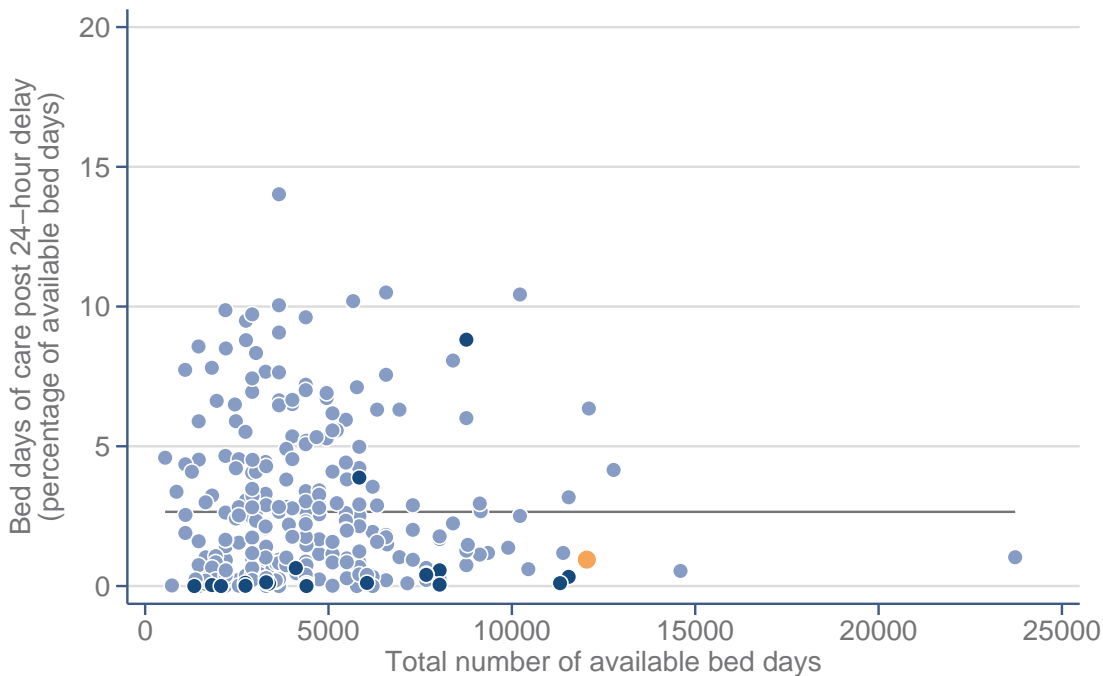
Definition

- Eligible: Critical care unit survivors discharged to a ward in the same hospital (or direct to home)
- Numerator: Bed days of care provided for critical care unit survivors more than 8 hours after the reported time fully ready for discharge
- Denominator: Total number of available bed days in the critical care unit



© ICNARC 2019

Bed days of care post 24-hour delay



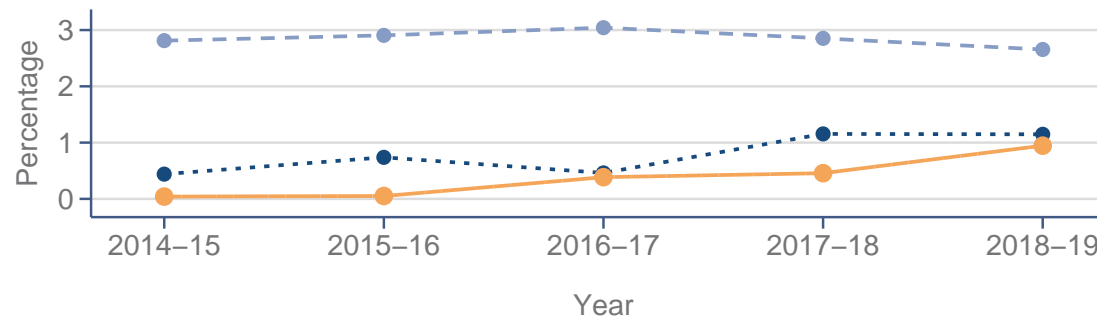
© ICNARC 2019

● Your unit (0.9%) ● Similar units (1.1%) ● All units (2.7%)

| | Eligible | Numerator | Denominator | Result |
|-----------------------|----------|-----------|-------------|--------|
| Quarter 1 [N=666] | 604 | 12.7 | 3003 | 0.4% |
| Quarter 2 [N=712] | 658 | 26.3 | 3036 | 0.9% |
| Quarter 3 [N=638] | 571 | 30.5 | 3036 | 1.0% |
| Quarter 4 [N=572] | 505 | 44.5 | 2970 | 1.5% |
| Full year [N=2588] | 2338 | 113.9 | 12045 | 0.9% |

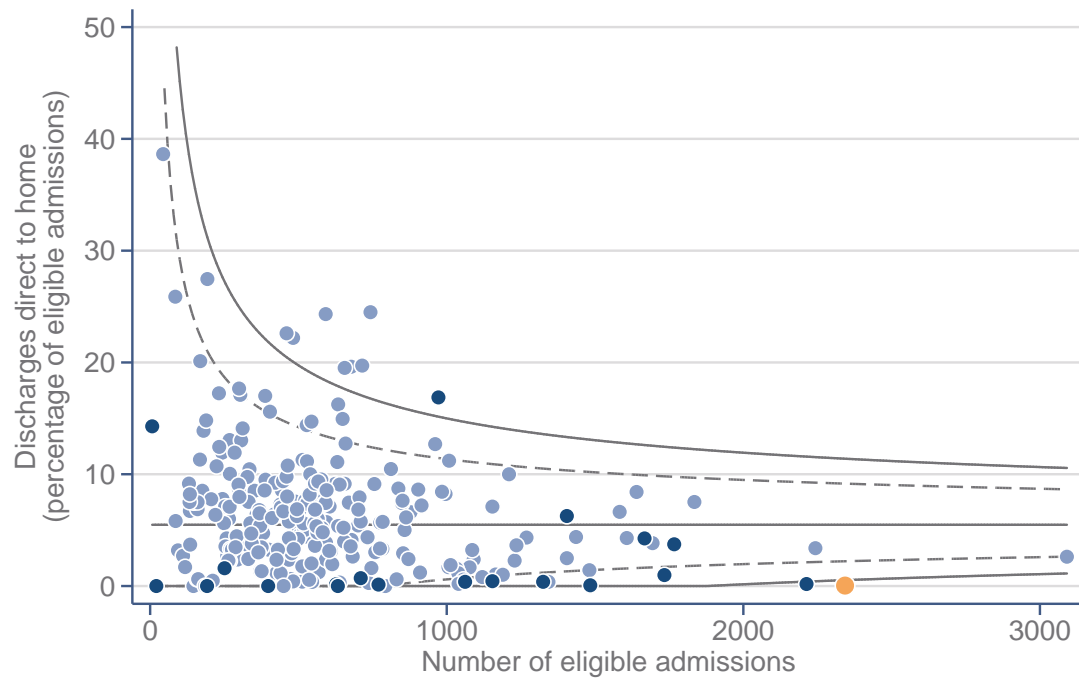
Definition

- Eligible: Critical care unit survivors discharged to a ward in the same hospital (or direct to home)
- Numerator: Bed days of care provided for critical care unit survivors more than 24 hours after the reported time fully ready for discharge
- Denominator: Total number of available bed days in the critical care unit



© ICNARC 2019

Discharges direct to home



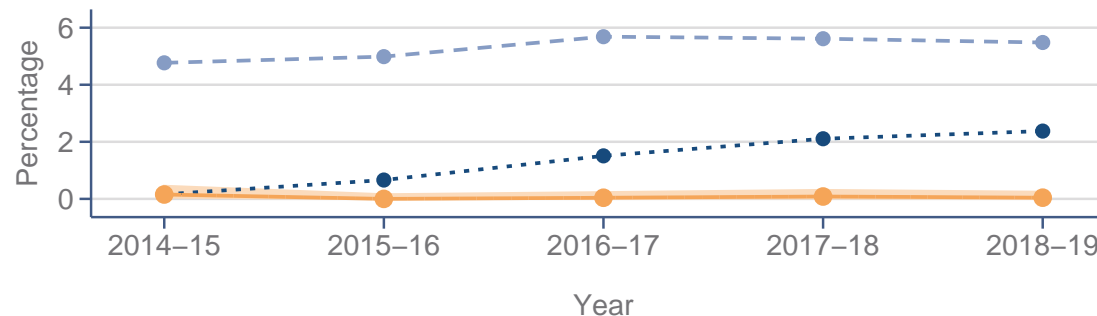
© ICNARC 2019



| | Eligible | Numerator | Denominator | Result | |
|-----------------------|----------|-----------|-------------|----------------------|--------------------------------------|
| Quarter 1 [N=666] | 606 | 0 | 606 | 0.0% | ■ |
| Quarter 2 [N=712] | 659 | 1 | 659 | 0.2% | ■ |
| Quarter 3 [N=638] | 571 | 0 | 571 | 0.0% | ■ |
| Quarter 4 [N=572] | 507 | 0 | 507 | 0.0% | ■ |
| Full year [N=2588] | 2343 | 1 | 2343 | 0.0% (0.0%, 0.2%) | ■ |

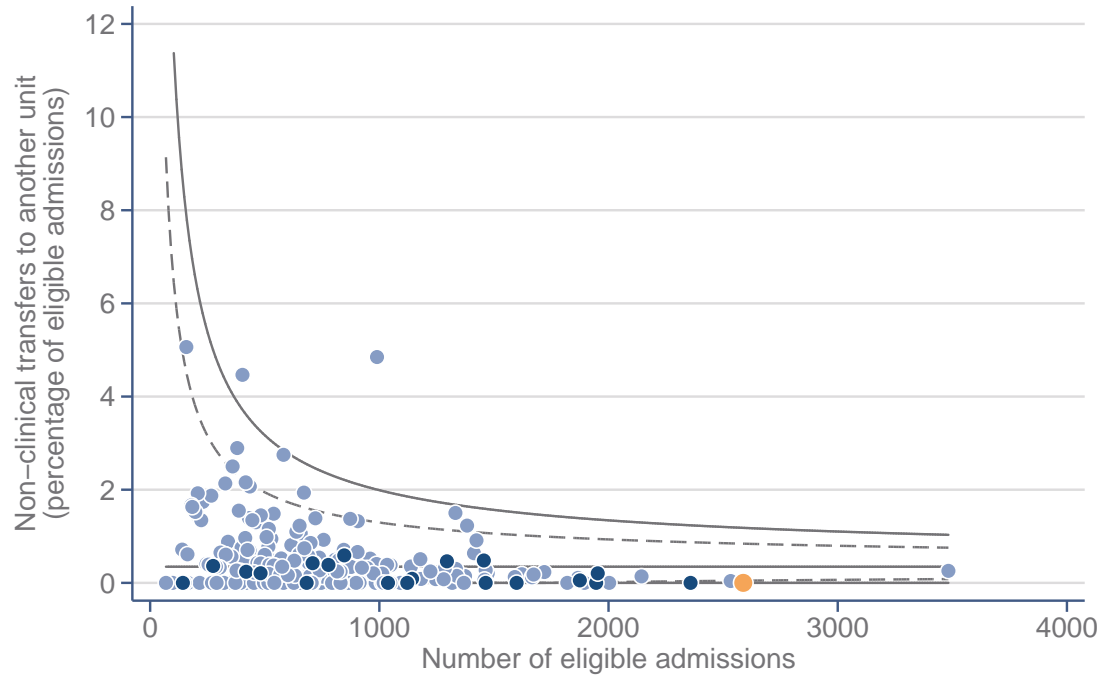
Definition

- Eligible: Critical care unit survivors with a reason for discharge from the critical care unit of ending critical care, excluding planned admissions direct from home
- Numerator: Number of eligible admissions discharged direct to a non-hospital location
- Denominator: Number of eligible admissions



© ICNARC 2019

Non-clinical transfers to another unit



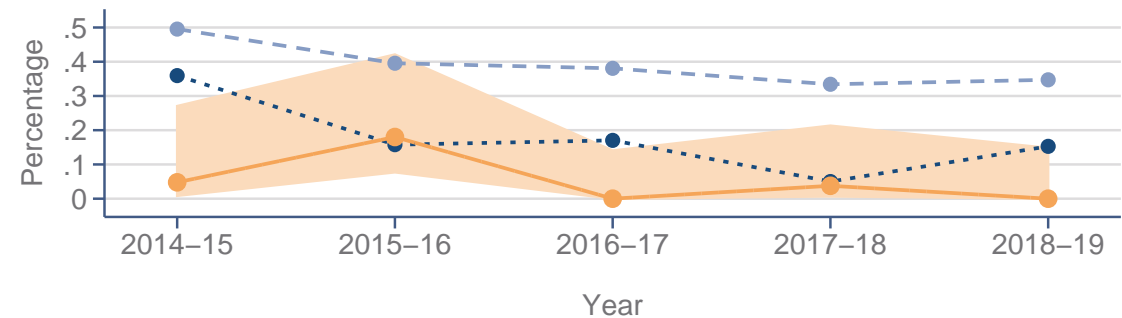
© ICNARC 2019



| | Eligible | Numerator | Denominator | Result | |
|-----------------------|----------|-----------|-------------|----------------------|--------------------------------------|
| Quarter 1 [N=666] | 666 | 0 | 666 | 0.0% | ■ |
| Quarter 2 [N=712] | 712 | 0 | 712 | 0.0% | ■ |
| Quarter 3 [N=638] | 638 | 0 | 638 | 0.0% | ■ |
| Quarter 4 [N=572] | 572 | 0 | 572 | 0.0% | ■ |
| Full year [N=2588] | 2588 | 0 | 2588 | 0.0% (0.0%, 0.1%) | ■ |

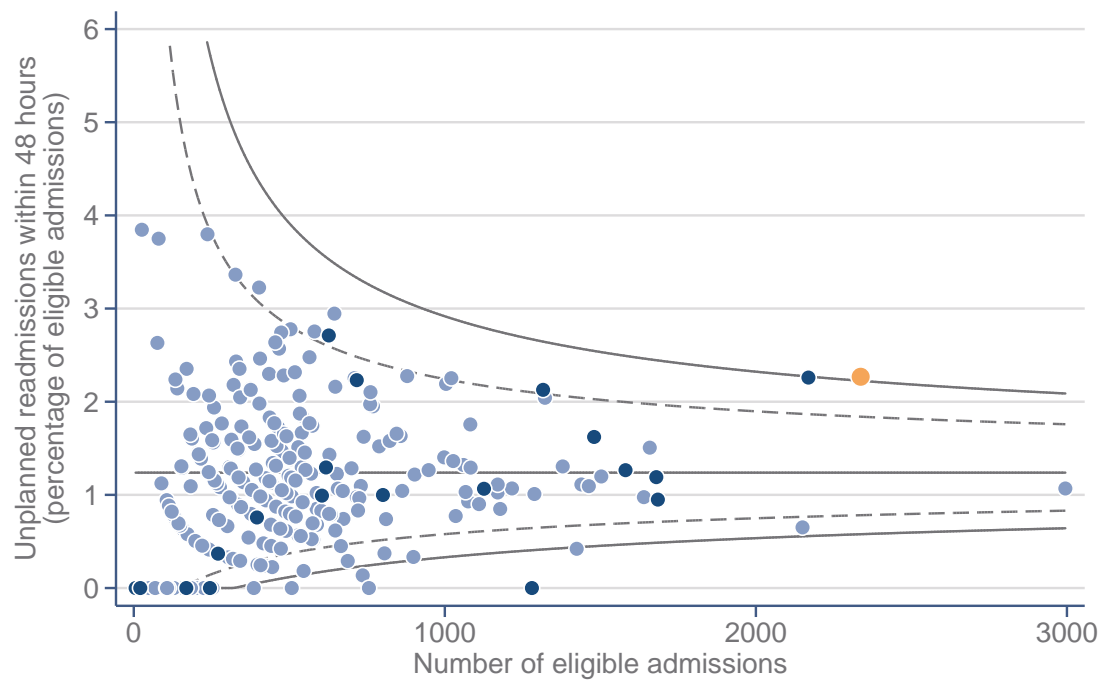
Definition

- Eligible: All critical care unit admissions, excluding those still in the unit at the time this report was run
- Numerator: Number of critical care unit survivors receiving Level 3 care on discharge and discharged for comparable critical care to a Level 3 bed in a critical care unit in another acute hospital [For HDUs, number of critical care unit survivors receiving Level 2 care on discharge and discharged for comparable critical care to a Level 2 bed in a critical care unit in another acute hospital]
- Denominator: Number of eligible admissions



© ICNARC 2019

Unplanned readmissions within 48 hours



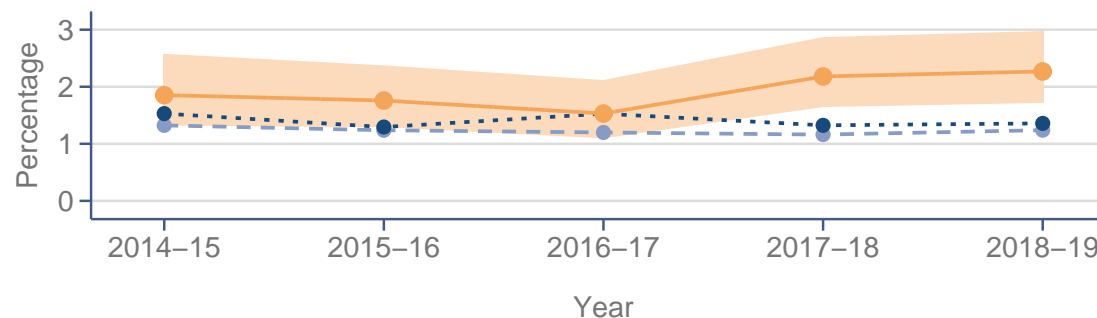
© ICNARC 2019

● Your unit (2.3%) ● Similar units (1.5%) ● All units (1.2%)

| | Eligible | Numerator | Denominator | Result | |
|-----------------------|----------|-----------|-------------|----------------------|---------------|
| Quarter 1 [N=666] | 604 | 15 | 604 | 2.5% | Yellow square |
| Quarter 2 [N=712] | 657 | 22 | 657 | 3.3% | Red square |
| Quarter 3 [N=638] | 571 | 10 | 571 | 1.8% | Green square |
| Quarter 4 [N=572] | 505 | 6 | 505 | 1.2% | Green square |
| Full year [N=2588] | 2337 | 53 | 2337 | 2.3% (1.7%, 3.0%) | Red square |

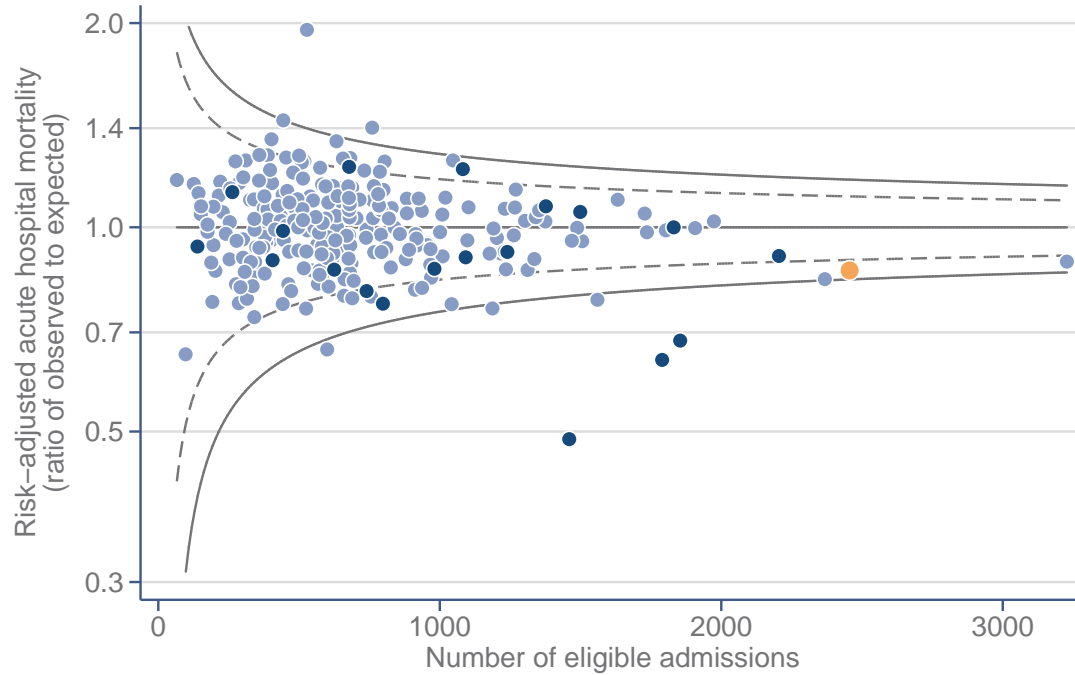
Definition

- Eligible: Critical care unit survivors discharged to a ward within the same hospital
- Numerator: Number of eligible admissions subsequently readmitted (unplanned) to the same critical care unit within 48 hours of discharge
- Denominator: Number of eligible admissions



© ICNARC 2019

Risk-adjusted acute hospital mortality



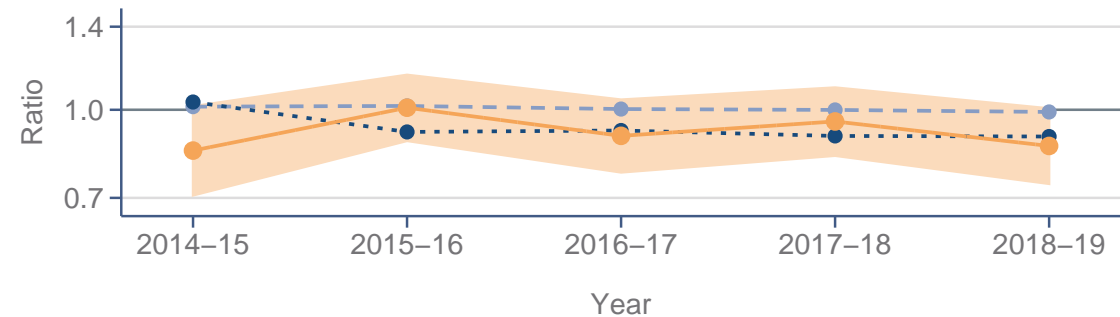
| | Eligible | Numerator | Denominator | Result | |
|-----------------------|----------|-----------|-------------|----------------------|--------------------------------------|
| Quarter 1 [N=666] | 630 | 37 | 46.1 | 0.80 | ■ |
| Quarter 2 [N=712] | 676 | 28 | 38.3 | 0.73 | ■ |
| Quarter 3 [N=638] | 612 | 53 | 46.9 | 1.13 | ■ |
| Quarter 4 [N=572] | 538 | 36 | 47.0 | 0.77 | ■ |
| Full year [N=2588] | 2456 | 154 | 178.3 | 0.86 (0.74, 1.01) | ■ |

© ICNARC 2019

● Your unit (0.86)
 ● Similar units
 ● All units

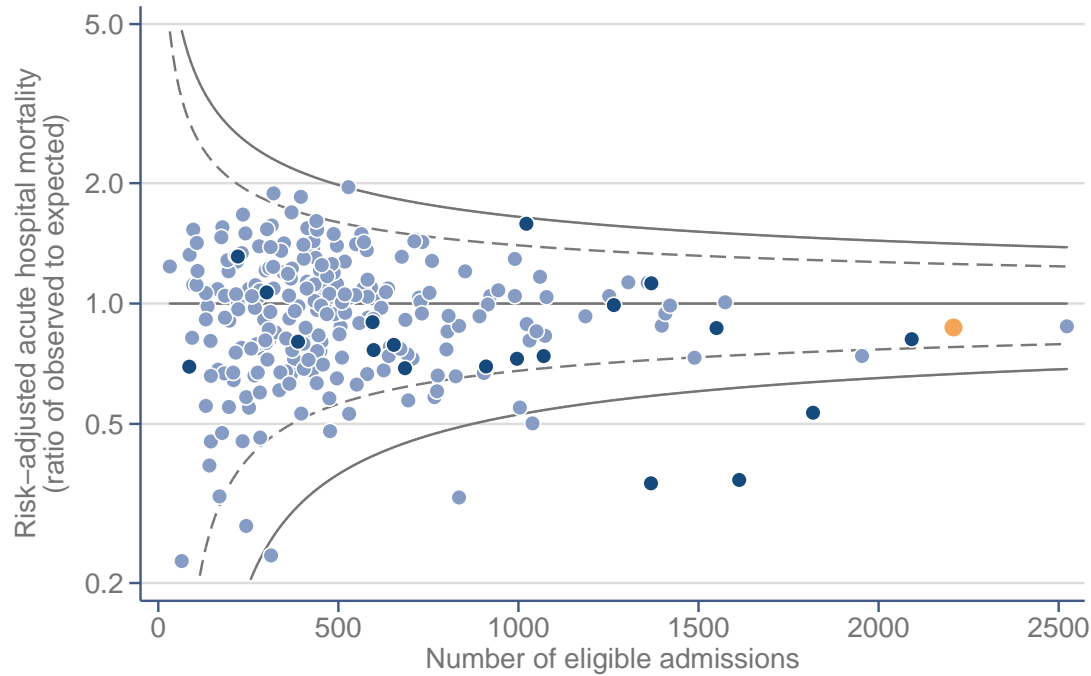
Definition

- Eligible: All critical care unit admissions, excluding readmissions, patients dead on admission and those admitted to facilitate organ donation
- Numerator: Observed number of eligible admissions that died before ultimate discharge from acute hospital
- Denominator: Expected number of acute hospital deaths among eligible admissions from the ICNARC_{H-2018} model



© ICNARC 2019

Risk-adjusted acute hospital mortality - predicted risk < 20%



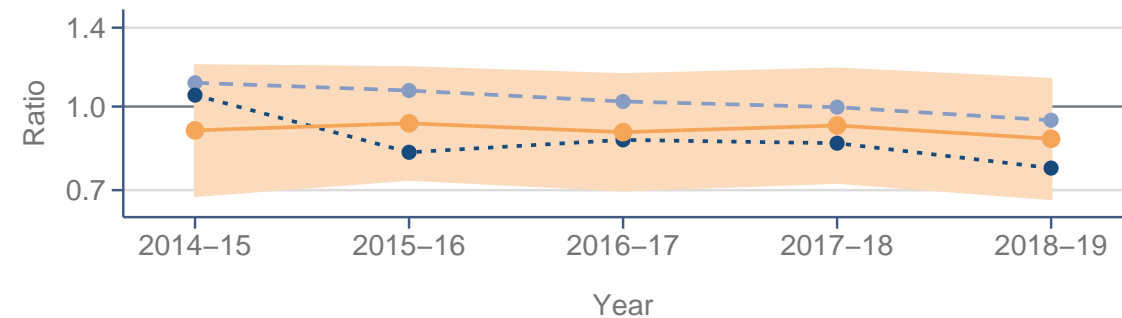
| | Eligible | Numerator | Denominator | Result | |
|-----------------------|----------|-----------|-------------|----------------------|--------------------------------------|
| Quarter 1 [N=666] | 569 | 11 | 17.2 | 0.64 | ■ |
| Quarter 2 [N=712] | 627 | 11 | 18.0 | 0.61 | ■ |
| Quarter 3 [N=638] | 540 | 22 | 15.4 | 1.43 | ■ |
| Quarter 4 [N=572] | 472 | 13 | 14.9 | 0.87 | ■ |
| Full year [N=2588] | 2208 | 57 | 65.4 | 0.87 (0.67, 1.12) | ■ |

© ICNARC 2019



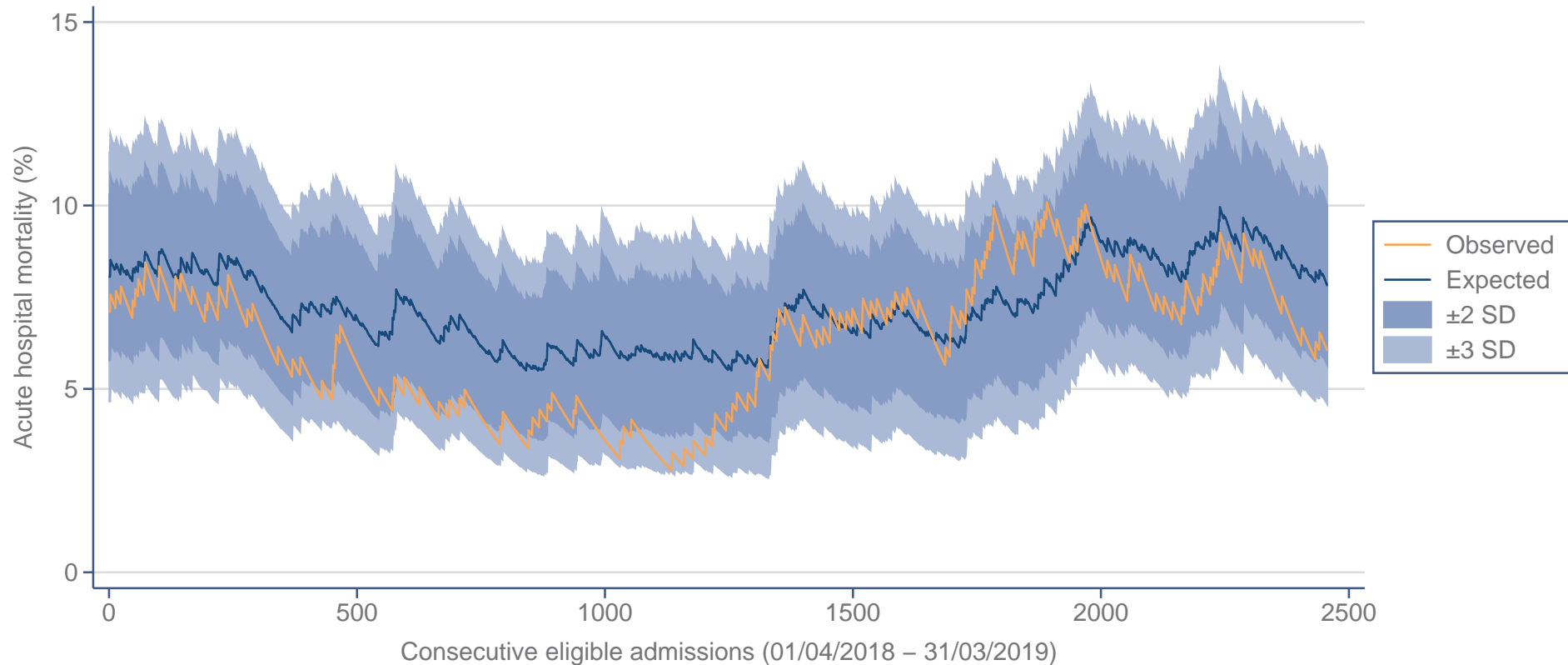
Definition

- Eligible: All critical care unit admissions with a predicted risk of death < 20% on the ICNARC_{H-2018} model, excluding readmissions, patients dead on admission and those admitted to facilitate organ donation
- Numerator: Observed number of eligible admissions that died before ultimate discharge from acute hospital
- Denominator: Expected number of acute hospital deaths among eligible admissions from the ICNARC_{H-2018} model



© ICNARC 2019

Risk-adjusted acute hospital mortality (EWMA plot)



© ICNARC 2019

Explanation

- The Exponentially Weighted Moving Average (EWMA) plot shows the trends in observed and expected acute hospital mortality in your unit for the time period of the report
- Expected acute hospital mortality is calculated from the ICNARC_{H-2018} model
- The plots are updated after each consecutive eligible admission and points are 'exponentially weighted' – giving a larger weighting to the most recent admissions to smooth the appearance of the lines
- The blue shaded areas of the plot represent 2 and 3 standard deviations (SD) above and below the expected line
- If the observed line is above the blue shaded areas, this means the observed acute hospital mortality is significantly higher than expected
- If the observed line is below the blue shaded areas, this means the observed acute hospital mortality is significantly lower than expected

Case mix (i)

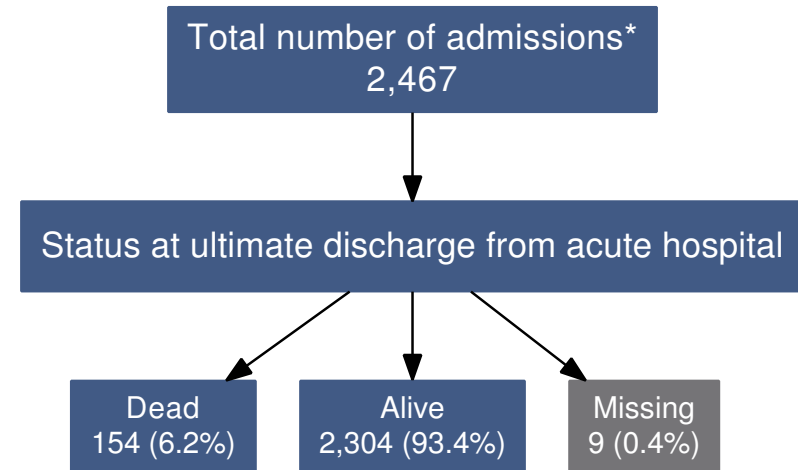
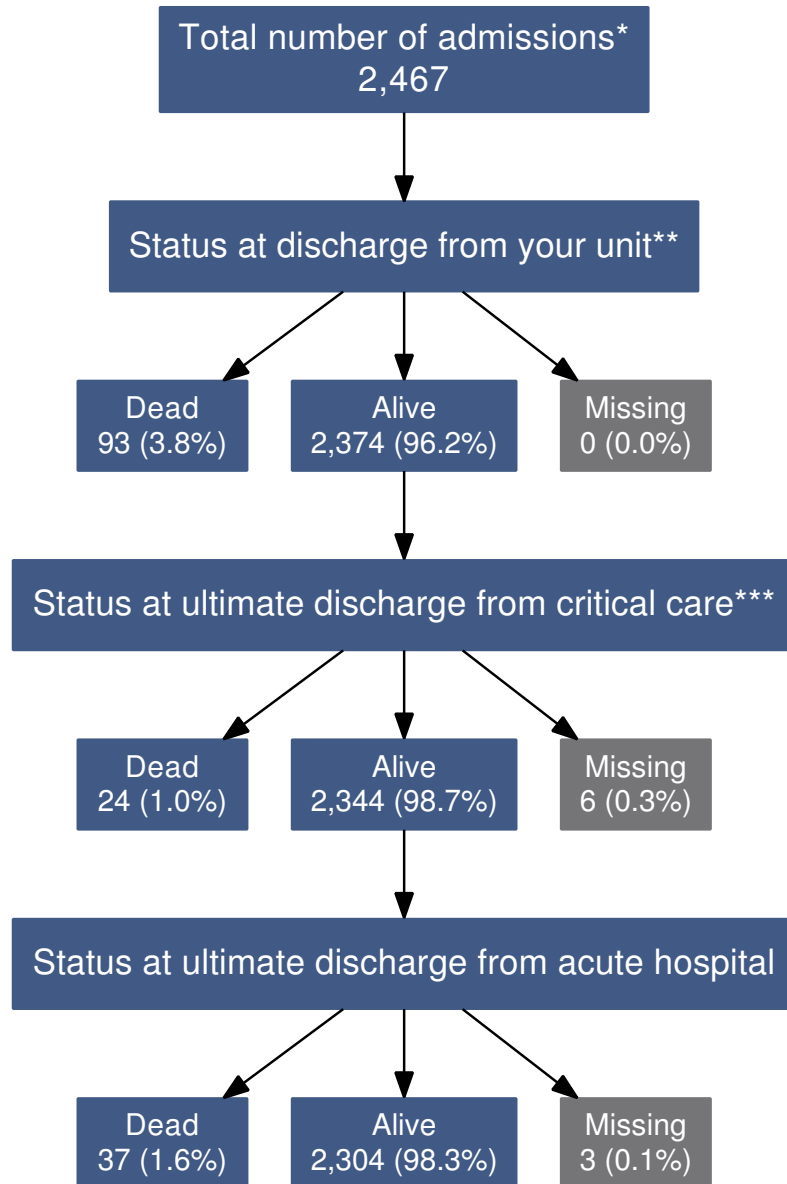
| | Your unit | Similar units | All units |
|---|-------------|---------------|-------------|
| Age (years), mean (SD) | 65.9 (13.9) | 64.6 (13.8) | 61.0 (17.4) |
| Male, n (%) | 1736 (67.1) | (69.6) | (57.2) |
| Severe conditions in past medical history, n (%) | | | |
| Severe liver disease | 1 (0.0) | (0.2) | (2.3) |
| Severe respiratory disease or home ventilation | 60 (2.3) | (1.3) | (2.5) |
| Haematological malignancy | 0 (0.0) | (0.6) | (1.8) |
| Metastatic disease | 2 (0.1) | (1.0) | (3.6) |
| Immunocompromise* | 19 (0.7) | (2.6) | (7.2) |
| Prior dependency, n (%) | | | |
| Able to live without assistance with daily activities | 2318 (89.6) | (86.9) | (77.4) |
| Some (minor/major) assistance with daily activities | 268 (10.4) | (13.0) | (21.5) |
| Total assistance with all daily activities | 1 (0.0) | (0.1) | (1.1) |
| CPR within 24 hours prior to admission, n (%) | | | |
| Community CPR | 66 (2.6) | (2.3) | (2.9) |
| In-hospital CPR | 22 (0.9) | (1.7) | (2.3) |

* Daily high-dose steroid treatment, chemotherapy, radiotherapy, congenital immunohumoral or cellular immune deficiency state or AIDS

Case mix (ii)

| | Your unit | Similar units | All units |
|---|----------------|----------------|-----------------|
| Source of admission, n (%) | | | |
| Emergency department or not in hospital – unplanned admission | 69 (2.7) | (6.8) | (23.5) |
| Emergency department or not in hospital – planned admission | 23 (0.9) | (0.8) | (0.6) |
| Theatre – planned admission following elective/scheduled surgery | 1977 (76.4) | (67.8) | (27.7) |
| Theatre – unplanned admission following elective/scheduled surgery | 3 (0.1) | (1.5) | (3.2) |
| Theatre – admission following emergency/urgent surgery | 159 (6.1) | (9.5) | (17.0) |
| Ward or intermediate care area | 226 (8.7) | (9.0) | (22.5) |
| Other critical care unit – repatriation | 3 (0.1) | (0.0) | (0.6) |
| Other critical care unit – planned or unplanned transfer | 100 (3.9) | (3.4) | (4.2) |
| Other acute hospital (not critical care) | 28 (1.1) | (1.1) | (0.8) |
| Severity scores, mean (SD) | | | |
| ICNARC Physiology Score | 14.9 (6.9) | 13.8 (6.8) | 15.3 (8.5) |
| APACHE II Acute Physiology Score | 8.7 (3.8) | 8.8 (4.2) | 10.4 (5.6) |
| APACHE II Score | 13.0 (4.2) | 13.1 (4.9) | 14.6 (6.4) |
| ICNARC _{H-2018} model predicted risk of acute hospital mortality (%), median (IQR) | 1.9 (0.9, 5.8) | 1.9 (0.9, 5.5) | 4.7 (1.3, 20.4) |

Outcome

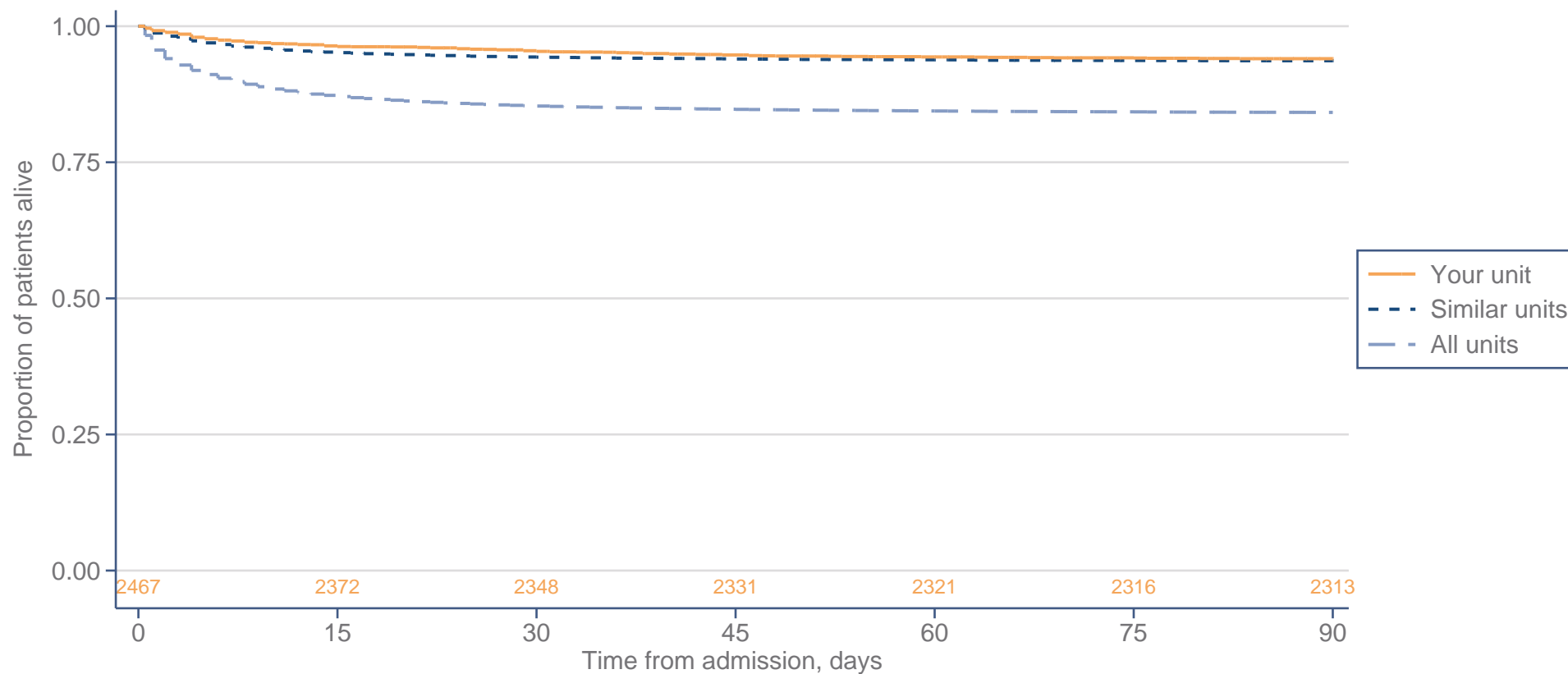


- * Excluding readmissions of the same patient within the same acute hospital stay
- ** Where a patient was admitted to your unit more than once during the same acute hospital stay, the first admission is used
- *** For all patients discharged alive from your unit, including those not transferred to another critical care unit

Explanation

- In the staged outcome flow (left), the numbers of admissions at each stage are reported as percentages of those alive at the previous stage
- In the overall outcome flow (above), the status at ultimate discharge from acute hospital is presented as the percentage of all admissions (i.e. excluding readmissions of the same patient in the same acute hospital stay)

Survival (K-M plot)



© ICNARC 2019

Explanation

- The Kaplan-Meier (K-M) plot shows the proportion of patients that remain alive by the number of days following admission to the critical care unit
- The numbers at the foot of the figure are the numbers of patients that have not died or been lost to follow-up for your unit at that time point
- Patients discharged from acute hospital before 90 days are assumed to have survived to 90 days

Admission groups

| | Number of admissions (%) | | | Acute hospital mortality*, n/N (%) | | |
|---------------------------------------|--------------------------|---------------|-----------|------------------------------------|---------------|-----------|
| | Your unit | Similar units | All units | Your unit | Similar units | All units |
| Elective/scheduled surgery | 1980 (76.5) | (69.3) | (30.9) | 48/1961 (2.4) | (2.3) | (2.2) |
| Emergency/urgent surgery | 159 (6.1) | (9.5) | (17.0) | 9/136 (6.6) | (6.7) | (12.8) |
| Non-surgical | 449 (17.3) | (21.2) | (52.2) | 97/361 (26.9) | (22.6) | (26.1) |
| Elective/scheduled CABG† | 728 (28.1) | (25.2) | (3.1) | 12/721 (1.7) | (1.5) | (1.5) |
| Elective/scheduled valve surgery† | 917 (35.4) | (24.6) | (3.1) | 22/907 (2.4) | (2.5) | (2.6) |
| Mechanically ventilated§ | 2290 (88.5) | (69.8) | (36.9) | 131/2219 (5.9) | (6.6) | (25.6) |
| Sepsis (Sepsis-3)§ | 135 (5.2) | (5.9) | (24.9) | 26/110 (23.6) | (18.5) | (26.3) |
| Sepsis (0 organ dysfunctions) | 3 (0.1) | (0.4) | (2.3) | N<5 | (3.8) | (7.7) |
| Sepsis (1 organ dysfunction) | 34 (1.3) | (2.2) | (10.1) | 4/30 (13.3) | (10.2) | (15.1) |
| Sepsis (2 organ dysfunctions) | 35 (1.4) | (1.7) | (6.9) | 2/22 (9.1) | (13.1) | (28.1) |
| Sepsis (3 organ dysfunctions) | 23 (0.9) | (0.9) | (3.6) | 2/17 (11.8) | (29.4) | (45.8) |
| Sepsis (4 or more organ dysfunctions) | 40 (1.5) | (0.7) | (2.0) | 18/38 (47.4) | (49.6) | (62.6) |
| Septic shock (Sepsis-3)§ | 63 (2.4) | (1.6) | (3.7) | 16/55 (29.1) | (24.3) | (51.3) |
| Acute kidney injury (all)§ | 814 (31.5) | (45.8) | (55.0) | 90/751 (12.0) | (11.1) | (22.0) |
| Acute kidney injury (KDIGO stage I) | 483 (18.7) | (19.8) | (18.2) | 30/455 (6.6) | (7.4) | (15.0) |
| Acute kidney injury (KDIGO stage II) | 209 (8.1) | (21.0) | (25.5) | 37/191 (19.4) | (11.2) | (19.9) |
| Acute kidney injury (KDIGO stage III) | 122 (4.7) | (5.0) | (11.3) | 23/105 (21.9) | (26.3) | (38.2) |

* Excluding readmissions of the same patient within the same acute hospital stay

† Primary reason for admission

§ During the first 24 hours following admission

KDIGO - Kidney Disease: Improving Global Outcomes

Infection

| | Your unit | Similar units | All units |
|---|---------------|---------------|-----------|
| Total number of admissions | 2588 | | |
| MRSA present, n (%) | | | |
| Admission MRSA | 6 (0.2) | (0.4) | (0.9) |
| Unit-acquired MRSA | 3 (0.1) | (0.0) | (0.1) |
| No MRSA | 2578 (99.6) | (84.1) | (94.2) |
| No samples taken | 1 (0.0) | (15.4) | (4.8) |
| Clostridium difficile present, n (%) | | | |
| Admission C. difficile | 0 (0.0) | (0.1) | (0.3) |
| Unit-acquired C. difficile | 4 (0.2) | (0.0) | (0.1) |
| No C. difficile | 112 (4.3) | (8.0) | (19.8) |
| No samples taken | 2472 (95.5) | (91.9) | (79.8) |
| VRE present, n (%) | | | |
| Admission VRE | 18 (0.7) | (0.2) | (0.7) |
| Unit-acquired VRE | 34 (1.3) | (0.1) | (0.2) |
| No VRE | 2506 (96.8) | (21.6) | (35.9) |
| No samples taken | 30 (1.2) | (78.1) | (63.1) |
| Number of admissions staying at least 48 hours | 1012 | | |
| Total patient days for admissions staying at least 48 hours | 9982 | | |
| Unit-acquired infections, n (rate per 1,000 patient days) | | | |
| Unit-acquired MRSA | 3 (0.3) | (0.1) | (0.3) |
| Unit-acquired C. difficile | 4 (0.4) | (0.1) | (0.3) |
| Unit-acquired VRE | 34 (3.4) | (0.4) | (0.5) |
| Unit-acquired infection in blood [number of patients] | 27 (1.0) [24] | (0.9) | (0.9) |

Length of stay

| | N Your unit | Median (IQR) or n (%) | | | Mean (SD) | | |
|--|----------------|-----------------------|----------------|----------------|-------------|---------------|-----------|
| | | Your unit | Similar units | All units | Your unit | Similar units | All units |
| Length of stay in acute hospital prior to admission to your unit (days)* | 2467 | 1 (1, 1) | 1 (1, 3) | 1 (0, 2) | 3 (6) | 4 (10) | 3 (13) |
| Length of stay in your unit (days) | | | | | | | |
| All admissions† | 2588 | 1.2 (0.9, 3.9) | 2.0 (1.0, 4.0) | 2.2 (1.0, 4.8) | 4.1 (8.0) | 3.7 (6.2) | 4.5 (7.5) |
| Unit survivors | 2488 | 1.2 (0.9, 3.7) | 1.9 (0.9, 3.9) | 2.2 (1.0, 4.8) | 3.8 (7.2) | 3.5 (5.7) | 4.4 (7.3) |
| Unit non-survivors | 100 | 4.6 (1.8, 13.9) | 3.8 (1.2, 8.4) | 2.4 (0.8, 6.1) | 12.4 (17.6) | 7.5 (12.0) | 5.2 (8.9) |
| Duration from reported time fully ready for discharge to time of discharge‡, n (%) | | | | | | | |
| ≤ 4 hours | 2338 | 1531 (65.5) | (69.4) | (42.0) | | | |
| > 4 hours and ≤ 24 hours | 2338 | 644 (27.5) | (24.5) | (40.7) | | | |
| > 24 hours | 2338 | 163 (7.0) | (6.1) | (17.3) | | | |
| Length of stay in acute hospital following discharge from your unit (days)*§ | | | | | | | |
| All unit survivors | 2360 | 6 (4, 11) | 4 (3, 8) | 7 (4, 15) | 10 (14) | 8 (13) | 14 (20) |
| Acute hospital survivors | 2302 | 6 (4, 10) | 4 (3, 8) | 7 (4, 15) | 10 (13) | 8 (12) | 13 (20) |
| Acute hospital non-survivors | 56 | 12 (5, 29) | 10 (4, 27) | 8 (3, 21) | 21 (25) | 21 (27) | 17 (25) |
| Total length of stay in acute hospital (days)* | | | | | | | |
| All patients | 2453 | 10 (7, 18) | 9 (6, 16) | 10 (5, 21) | 16 (19) | 15 (19) | 18 (26) |
| Acute hospital survivors | 2304 | 9 (7, 18) | 9 (6, 16) | 11 (6, 22) | 16 (18) | 14 (18) | 19 (26) |
| Acute hospital non-survivors | 149 | 13 (5, 36) | 9 (4, 23) | 7 (2, 17) | 24 (26) | 18 (28) | 15 (24) |

* Excluding readmissions of the same patient within the same acute hospital stay

† Excluding admissions still in the critical care unit at the time this report was run

‡ Reported for unit survivors discharged to a ward in the same hospital (or direct to home)

§ Reported for unit survivors only

Occupied bed-days by reported specialty

| | N* | Occupied bed-days (%) | | |
|--------------------------------|-----------|-----------------------|---------------|-----------|
| | Your unit | Your unit | Similar units | All units |
| Cardiothoracic surgery | 2311 | 7983 (75.5) | (30.3) | (3.5) |
| Respiratory medicine | 69 | 986 (9.3) | (1.7) | (3.6) |
| Cardiothoracic transplantation | 44 | 833 (7.9) | (3.6) | (0.4) |
| Cardiology | 159 | 693 (6.6) | (13.0) | (4.3) |
| Other† | 5 | 77 (0.7) | (51.5) | (88.2) |

* Number of admissions, excluding admissions still in the critical care unit at the time this report was run

† Specialties occupying less than 1% of bed-days in your unit

Organ monitoring and support

| | — Number of admissions receiving support (%) — | | | — Days of support* (% of all patient days) — | | |
|---------------------------------------|--|---------------|-----------|--|---------------|-----------|
| | Your unit | Similar units | All units | Your unit | Similar units | All units |
| Basic respiratory support | 512 (19.8) | (55.5) | (48.7) | 921 (6.9) | (25.5) | (26.0) |
| Advanced respiratory support | 2383 (92.1) | (73.5) | (40.1) | 7530 (56.6) | (41.9) | (37.4) |
| Basic cardiovascular support | 1002 (38.7) | (69.5) | (85.7) | 3967 (29.8) | (47.6) | (70.4) |
| Advanced cardiovascular support | 2184 (84.4) | (57.3) | (20.5) | 8936 (67.1) | (40.5) | (11.3) |
| Renal support | 233 (9.0) | (6.2) | (8.9) | 2052 (15.4) | (9.5) | (9.0) |
| Neurological support | 7 (0.3) | (3.3) | (9.0) | 28 (0.2) | (3.0) | (7.7) |
| Gastrointestinal support | 460 (17.8) | (11.6) | (29.7) | 5415 (40.7) | (25.5) | (44.6) |
| Dermatological support | 62 (2.4) | (3.5) | (2.6) | 136 (1.0) | (3.9) | (2.9) |
| Liver support | 0 (0.0) | (0.4) | (1.1) | 0 (0.0) | (0.1) | (0.7) |
| Healthcare Resource Group [HRG code] | | | | | | |
| 6 organs supported [XC01Z] | 1 (0.0) | (0.1) | (0.1) | 19 (0.1) | (0.4) | (0.6) |
| 5 organs supported [XC02Z] | 11 (0.4) | (0.8) | (0.7) | 483 (3.7) | (4.3) | (3.0) |
| 4 organs supported [XC03Z] | 90 (3.5) | (4.5) | (3.6) | 1691 (13.0) | (14.7) | (11.0) |
| 3 organs supported [XC04Z] | 498 (19.2) | (31.4) | (14.9) | 4418 (34.1) | (35.6) | (24.1) |
| 2 organs supported [XC05Z] | 1816 (70.2) | (40.0) | (27.5) | 5971 (46.1) | (32.4) | (28.5) |
| 1 organ supported [XC06Z] | 155 (6.0) | (20.9) | (50.2) | 376 (2.9) | (11.9) | (31.9) |
| 0 organs supported [XC07Z] | 2 (0.1) | (1.7) | (2.2) | 2 (0.0) | (0.7) | (0.9) |
| No Level 2 or 3 care received [UZ01Z] | 15 (0.6) | (0.6) | (0.8) | N/A | | |

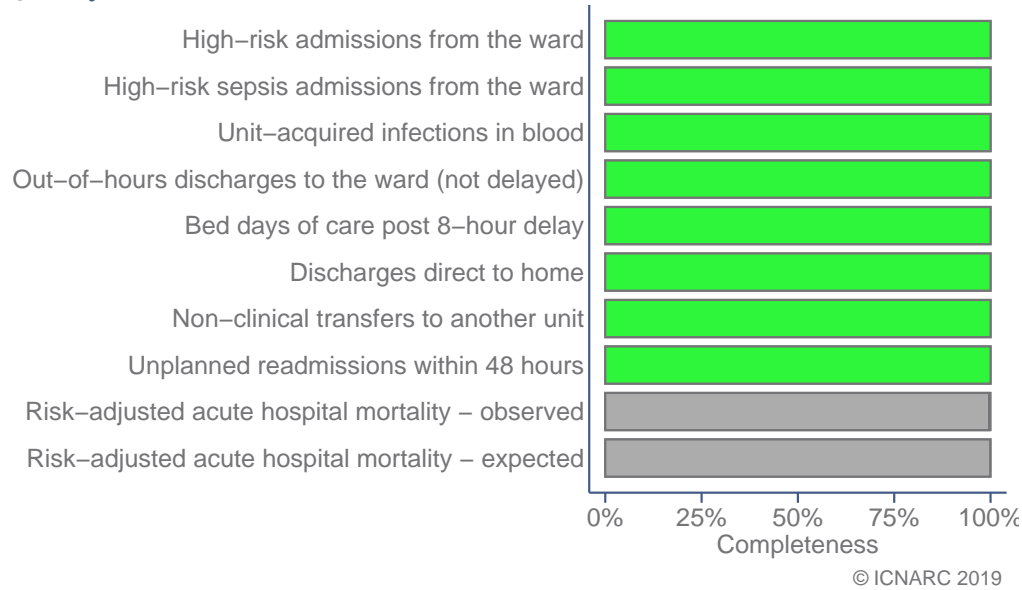
* For Healthcare Resource Groups, only days receiving Level 2 or 3 care are counted

End-of-life care

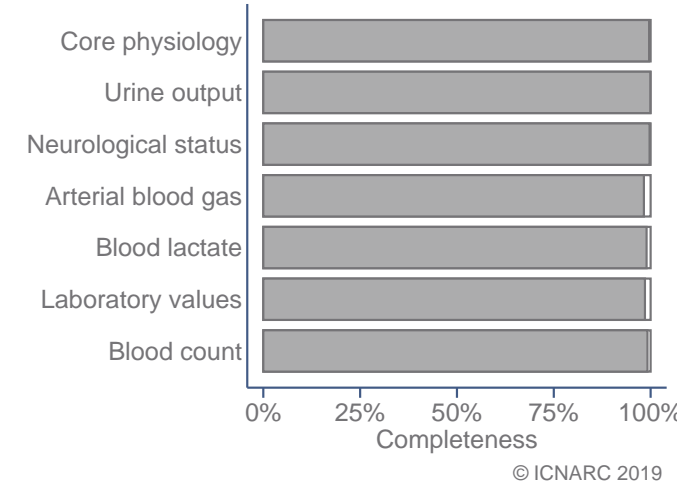
| | Your unit | Similar units | All units |
|--|---------------|---------------|--------------|
| Unit non-survivors, n (%) | 100 (3.9) | (4.6) | (11.1) |
| Length of stay in your unit for unit non-survivors (hours), median (IQR) | 110 (43, 333) | 90 (28, 201) | 57 (20, 146) |
| Treatment withheld/withdrawn, n (% of unit non-survivors) | | | |
| Treatment withheld | 0 (0.0) | (8.7) | (6.5) |
| Treatment withdrawn | 30 (30.0) | (37.4) | (46.1) |
| Treatment withheld then withdrawn | 0 (0.0) | (7.8) | (11.7) |
| Time from admission to treatment withdrawal (hours), median (IQR) | 165 (85, 699) | 117 (48, 241) | 69 (24, 162) |
| Time from treatment withdrawal to death (hours), median (IQR) | 0 (0, 1) | 1 (1, 4) | 2 (1, 4) |
| Brainstem death declared, n (% of unit non-survivors) | 5 (5.0) | (3.5) | (6.4) |
| Solid organ donation, n (% of brainstem/cardiac deaths) | | | |
| Donation following brainstem death (DBD) | 2 (40.0) | (31.4) | (53.3) |
| Donation following cardiac death (DCD) | 3 (3.2) | (2.0) | (2.2) |
| Time from death to removal of body (hours), median (IQR) | 3 (2, 4) | 3 (2, 4) | 2 (2, 3) |

Data completeness

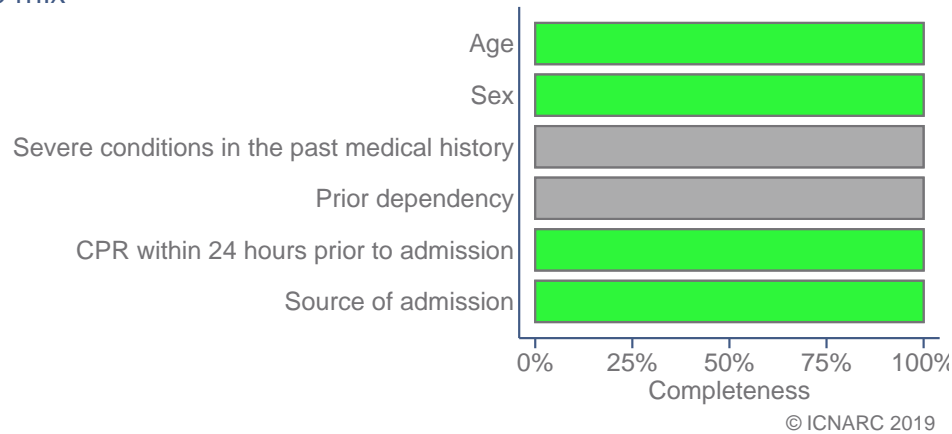
Quality indicators



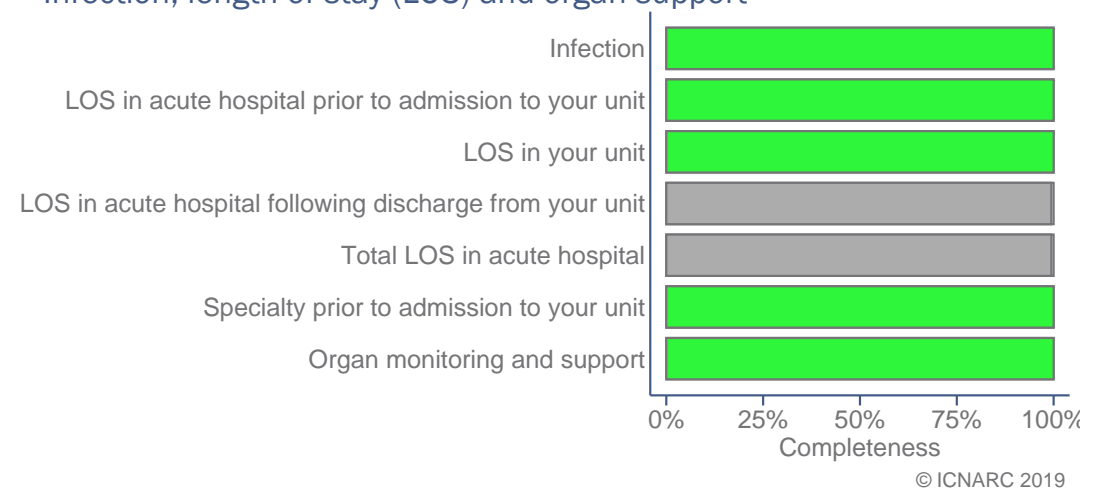
Physiology



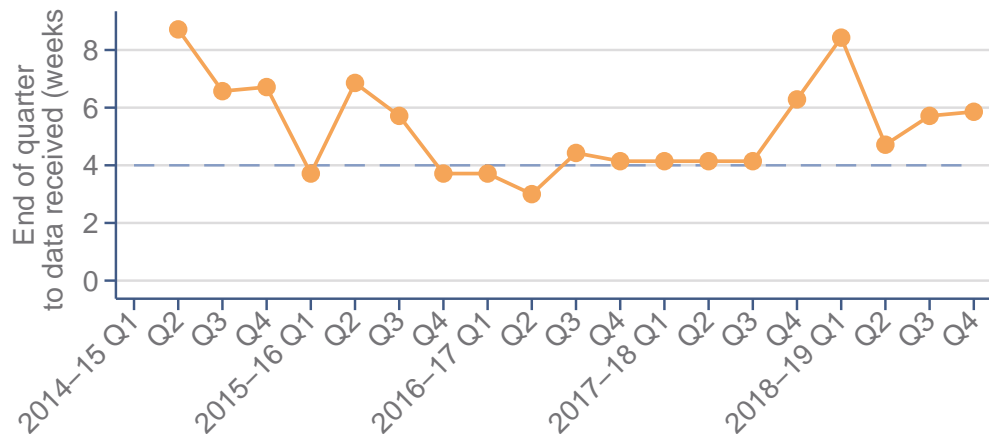
Case mix



Infection, length of stay (LOS) and organ support

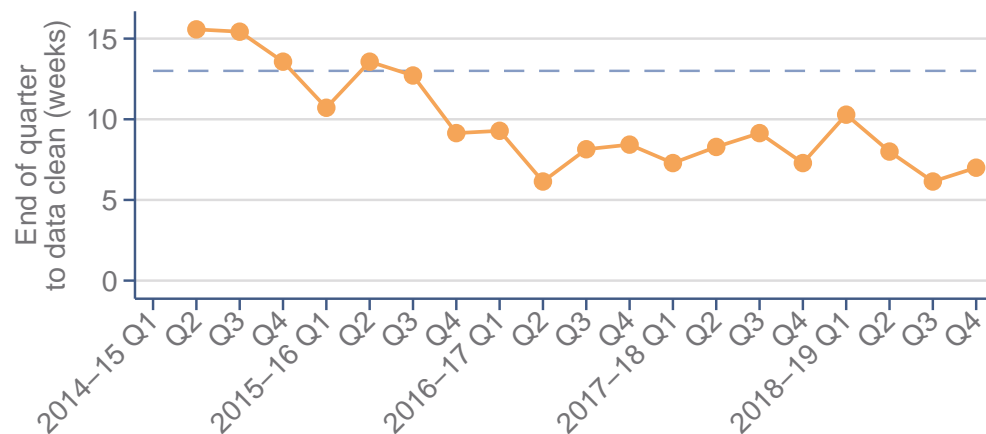


Participation



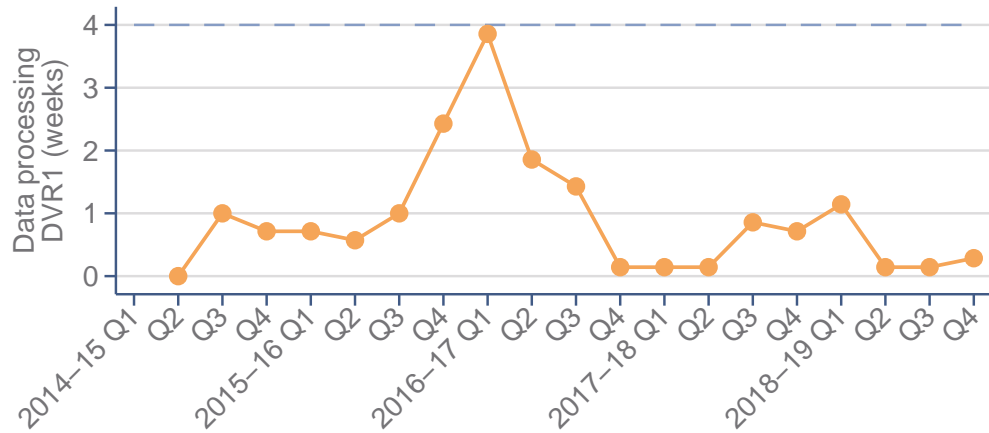
© ICNARC 2019

—●— Your unit - - - - Target (4 weeks)



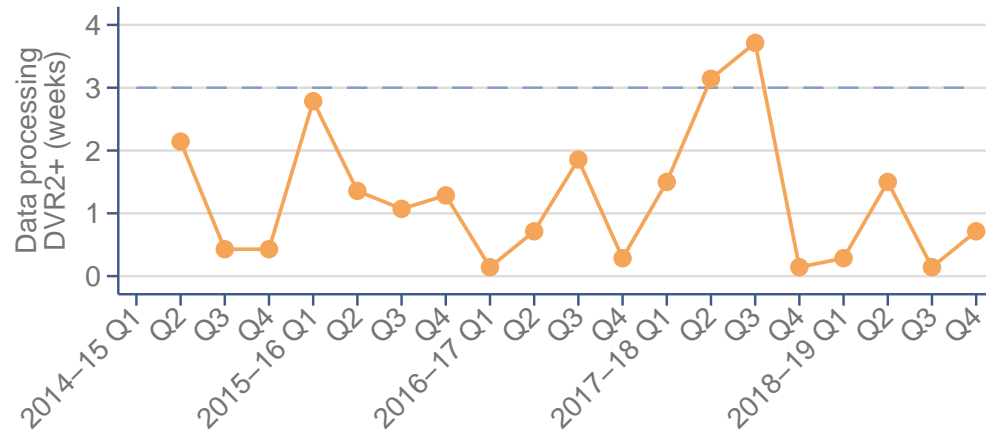
© ICNARC 2019

—●— Your unit - - - - Target (13 weeks)



© ICNARC 2019

—●— Your unit - - - - Target (4 weeks)



© ICNARC 2019

—●— Your unit - - - - Target (3 weeks)