

Can I still borrow print books now we are in a second lockdown?

That is the question!

Yes, you can continue to use our click and collect service. But please do also consider e-books as below.

Both print and e-books are listed on our catalogue.

[Go to ELMS catalogue](#)

Resource of the month

E-books: 24/7 on the go access

Start using e-books and benefit from:

- access to over 1000 titles;
- access anywhere at any time;
- no need to wait for the book you want to be returned;
- always having the latest edition;
- easy access from ELMS with your OpenAthens account



It's never been more important to have access to e-books. With this in mind we are focusing on increasing and diversifying our e-books collections.

Do you need a book that we haven't got? We will consider all recommendations. Just fill in our [Request a purchase](#) form from your library account.

[Search e-books on ELMS](#)

Literature searching or Accessing articles?

What training do I need?



I don't know where to start my search – you need [Beginner Literature Searching Skills](#) training.

I've done searches before but need to dig deeper – you need [Advanced Literature Searching Skills](#) training.

I have the abstract, but I'm confused about how to get hold of the full text for this article – you need an [Accessing Journal Articles Made Easy](#) session.

How do I know if Papworth have access to a specific journal? Again, you need an [Accessing Journal Articles Made Easy](#) session.

If you're in doubt, check the description of each training session on our [training page](#) or call library services for more information.

If you can't make one of the dates listed, [please contact us](#) for a 1-1.

[Go to training](#)

Remember: Things have changed

Print books are back, but the **procedures and timescales have changed.**

- The **books collection trolley** is now located next to the cardiology post area on the 1st floor admin area. The **returns box** is next to the lockers.
- **Timescales** are much longer due to books having to remain in quarantine. It can take around two weeks for books coming from other libraries, or our own books retrieved from storage.
- **Returned books** will take 7-10 working days to come off of your account because they have to be quarantined before we can process them. Don't worry. The book isn't lost. If you receive an email reminder, please ignore it. Please check your account again in a few days and it will have been discharged.
- Any books on hold are only checked out on **Mondays and Thursdays** when the library desk is staffed. You will receive an email confirming that the book can be collected.
- **Please help us by renewing your books** when they come up for renewal, even if you plan to return them soon.



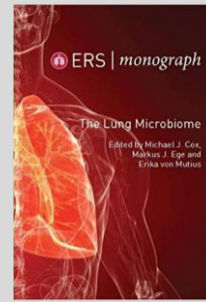
[Go to ELMS catalogue](#)

New ERS e-books available

You said: I need access to a few European Respiratory Society publications. Can you purchase them?

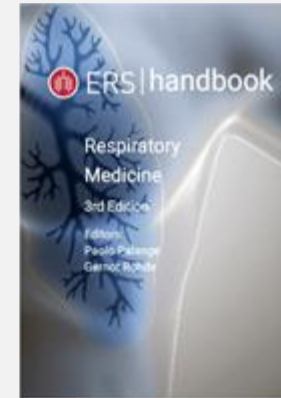
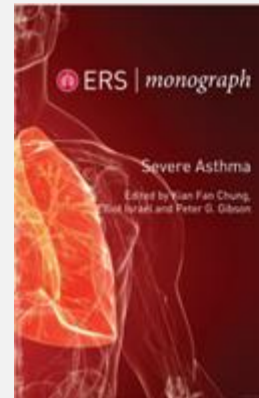
You said

We did



We did: We purchased 3 titles which are now available as e-books. Just search for ERS on our ELMS catalogue and follow the link provided. You will need an OpenAthens account. If you don't have one, you can register [here](#).

[Check ERS e-books](#)



New e-books in our catalogue

If you have checked the ELMS catalogue and Kortext, but we don't have the book you need, please submit a [request for a new purchase](#). Every request will be given due consideration.

[Go to ELMS catalogue](#)



All training sessions are online on MS Teams so it's easier than ever to attend. Book now!

Literature searching skills

Beginner: Thu 26th Nov, 10-11am
Fri 27th Nov, 10-11am

Advanced: Wed 25th Nov, 9-10am

Accessing journal articles made easy

Thu 26th Nov, 2-2.30pm

Endnote

Tue 24th Nov 2-3pm

Health literacy awareness

Tue 17th Nov 10-11am

E-books made easy

Mon 16th Nov, 12-12.30pm

Get to know your Library Services

Fri 13th Nov 1-1.30pm

Citing and Referencing

Wed 2nd Dec, 9-10am

[Go to calendar](#)

Any queries, please email papworth.library@nhs.net.

Quick links

[Join the library](#)

[Search the library catalogue, renew a book or place a hold](#)

[Request a training session](#)

To contact Library Services:

email: papworth.library@nhs.net

[Request a literature search](#)

[Register with OpenAthens](#)

[Keep up to date](#)

Phone: 01223 638606



Follow us on Twitter
[@royalpaplib](#)