



Introduction To ClinicalKey

Royal Papworth Hospital NHS Foundation Trust

May, 2023

Koon W. Chan- CSM UKNE- k.chan@elsevier.com

Agenda

- Introduction
- What is ClinicalKey?
- What do I use ClinicalKey for?
- Download the new App!
- Demo
- Q&A

Introduction:

Koon Wan Chan

Customer Success Manager for Benelux,
South-UK and Ireland

k.chan@elsevier.com



ClinicalKey[®]

- Comprehensive Search Engine
- 1000 books
- 800 journals
- 1500 Clinical Overviews
- 2500 Drug Monographs
- 6 million images
- 600 Clinical Calculators



ClinicalKey Use-cases

Patient Facing



To find a quick answer

Develop/ confirm assessment

Keep abreast of latest thinking

Non Patient Facing



For learning purposes

For teaching purposes

For Clinical Research





ELSEVIER

Demo: Searching on ClinicalKey



Download the app!



Google Playstore



Apple Appstore

Select Product

Changing products will require you to sign with the right account details for that product.

ClinicalKey®

Helping physicians drive better care by delivering fast, credible answers.

ClinicalKey® for Nursing

Empowering nurses with trusted resources for clinical answers.

Next



After download, open the app



You will be asked which product you have.

Please select [ClinicalKey] and press [NEXT]




Select Edition

Be sure to select the correct edition your institution is licensing.

To help you gain your correct entitlements

Which Edition would you like to use?

Select Edition 

ClinicalKey
(clinicalkey.com)

ClinicalKey Australia
(clinicalkey.com.au)

ClinicalKey France
(clinicalkey.fr)

ClinicalKey Japan
clinicalkey.jp)

ClinicalKey Spain and Latin America

Confirm your edition

At Papworth you have the Global Edition.

[ClinicalKey.com]



Validate your access

Press [Access via your Institution]



Diagnose conditions,
Validate decisions,
Get better outcomes.

Access via your Institution

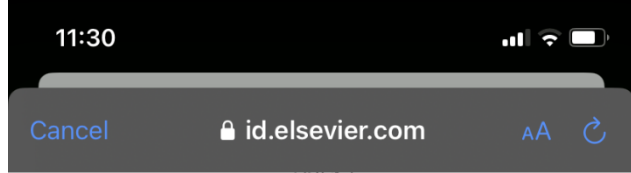
OR

Are you using registered network?

 Access via network

We will collect your IP address to verify your content
entitlements





Find your institution

Enter your email or institution name to continue

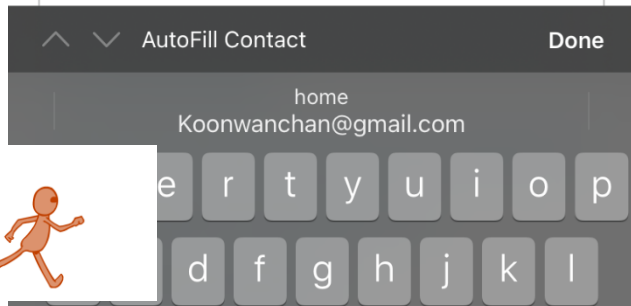
Institutional email or name of institution

Papworth

NHS in England (Royal **Papworth** Hospital NHS Foundation Trust)

VISN 20 VA Northwest Network

NES Knowledge Services Group - NHS Scotland (NHS Forth Valley)



Find your institution

Type in the name of your hospital and press [go]





Confirm your institution

You will be sent to **NHS in England (Royal Papworth Hospital NHS Foundation Trust)**.



NHS in England (Royal Papworth Hospital NHS Foundation Trust)

Confirm your institution ↗

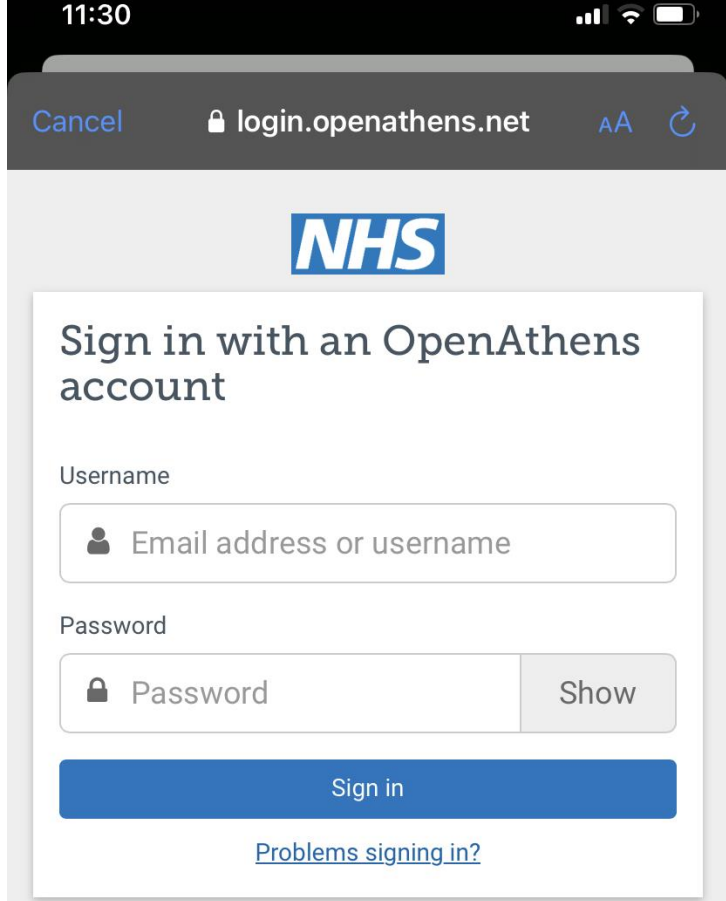
Try another way



Did you select the correct institution?

If so press [Confirm your institution]






Use your OA login to sign in



If you do not have an Open Athens Login, please contact your local library



using this site you agree to us setting cookies. Please see our [privacy and cookie information](#).

Powered by  OpenAthens



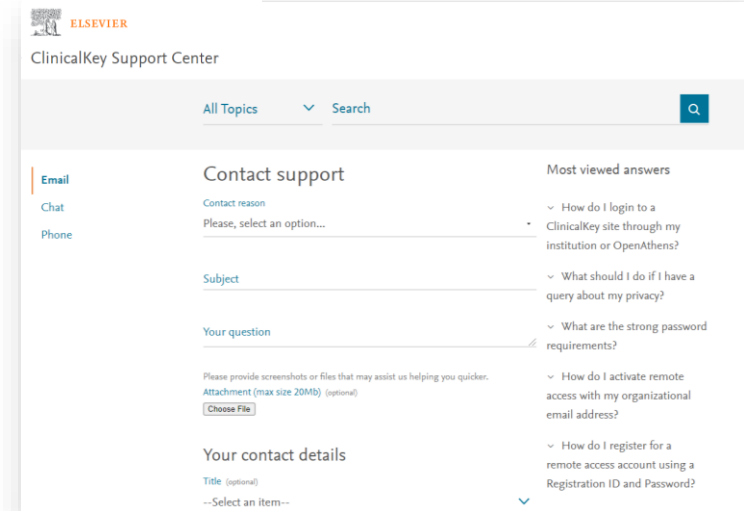
Support & Resources





Customer Support

- Need more information? Bookmark our [FAQs support page](#) if you need to track down more information about ClinicalKey.
- Chat with us [here](#)!
- HELP! I have access troubles: we can guide you [here](#).



The screenshot shows the ClinicalKey Support Center interface. At the top, there is the Elsevier logo and the text "ClinicalKey Support Center". Below this is a navigation bar with "All Topics" and a search box. The main content area is divided into three columns. The left column contains a vertical menu with "Email" (highlighted), "Chat", and "Phone". The middle column is titled "Contact support" and contains a form with fields for "Contact reason" (with a dropdown menu), "Subject", and "Your question". Below the question field is a note: "Please provide screenshots or files that may assist us helping you quicker." followed by an "Attachment (max size 20Mb) (optional)" field with a "Choose File" button. The right column is titled "Your contact details" and has a "Title (optional)" field with a dropdown menu. The rightmost column is titled "Most viewed answers" and lists several questions with expandable arrows, such as "How do I login to a ClinicalKey site through my institution or OpenAthens?", "What should I do if I have a query about my privacy?", "What are the strong password requirements?", "How do I activate remote access with my organizational email address?", and "How do I register for a remote access account using a Registration ID and Password?".



Implementation resources

Access the Implementation tab of the Global Resource Center to see instructions on:

- Link resolvers
- EHR Integration
- PubMed LinkOut
- Institutional branding
- Durable URL
- QR Codes
- Marc 21 Records

Open URL Linking

ClinicalKey institutional accounts with Link Resolvers have the option to link to journal articles or journal article search results. To set this up, contact Technical Support at [ClinicalKey Support Center](#) to add Open URL linking to your account. They will need the following information:

- URL for the link
- Text or URL for the graphic to be used for the linking
- Graphic should be in GIF format
- Graphic maximum dimensions for article abstract page link – 250px wide 250px high

[Download Public Access Interface Instructions](#)

EHR Integration

Integrate ClinicalKey into your EHR to give your physicians instant access to the most clinically relevant, evidence-based medical and surgical information at the point of care. To make this access available at your institution, please visit <https://www.clinicalkey.com/info/ehr> or [contact our Customer Service Team](#).

PubMed LinkOut

Note: Beginning in 2020, PubMed will be replacing LinkOut Submission Utility with a new service, LibraryLinkOut using Outside Tool. To learn more about this new service, please reference this






Social Media Engagement

- For our ClinicalKey subscribers we offer a lot online engagement activities. Each month you will receive our Social Media Calendar.



Activities follow the WHO calendar, together with webinars, workshops, trainings through different channels. It is more than just ClinicalKey or driving usage, but also efforts for Social Causes such as Equality, Diversity and Inclusion.

Hear Professor Sahin discuss the development of mRNA vaccines and therapies.



Register for our lecture now



ELSEVIER COVID-19 HEALTHCARE HUB

ClinicalKey
Health Information Week 2021
5-11 July

ClinicalKey invites you to follow our content on finding high quality health information

Find out in our ClinicalKey Toolkit



#HIW2021 #healthdays2021

Institutionalizing Equality, Inclusion and Diversity at the NHS

Join our **EMPOWER Workshop tomorrow!**

- Tina Daniels - Equality and Inclusion Lead @Blackpool Teaching Hospitals NHS Foundation Trust
- Elliott Parris - Manager of Europe, Data-as-a-Service and Co-Founder of Embrace @Elsevier
- Koon Wan Chan - Customer Success Manager BeneLux, Southern UK and Ireland ; founding member of EMPOWER @Elsevier

Register now! #EmpowerDiversity



ClinicalKey



Webinar
COVID-19: Reality and Misinformation

John McConnell
Editor-in-Chief, *The Lancet Infectious Diseases*

Wednesday 21st October 2020
2:00-3:30PM BST/WEST | 3:00-4:30PM CEST
4:00-5:30PM EEST/IDT



Join Elsevier Breast Cancer Awareness week and get involved in every-day virtual activity.

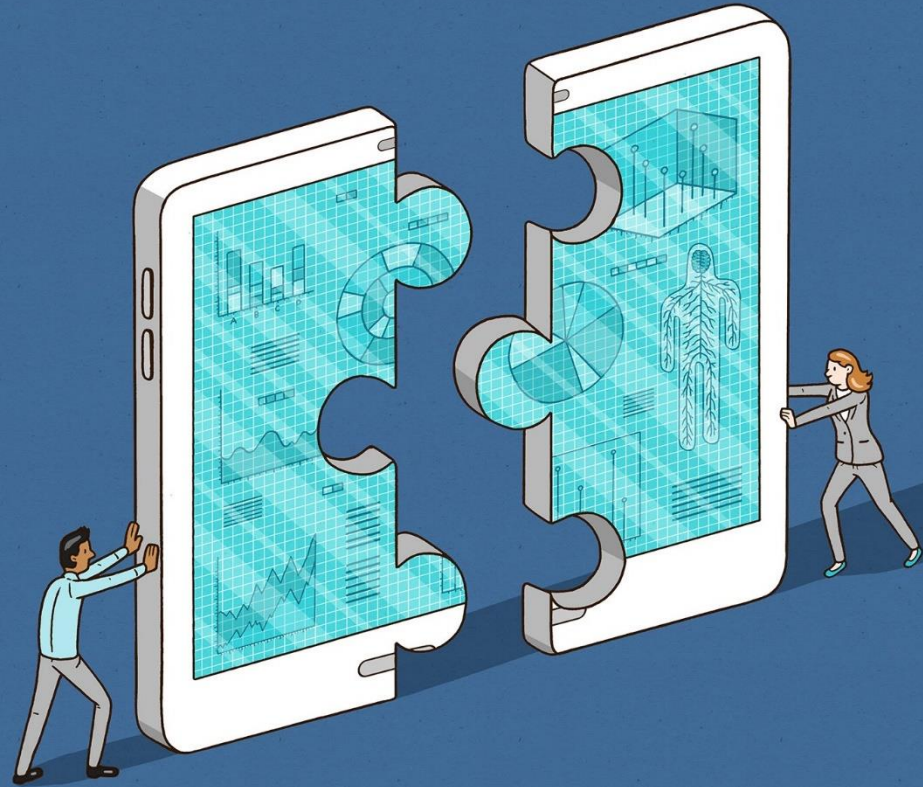
DATE	ACTIVITY	PLATFORM
MONDAY 12 OCTOBER	Welcome to the Elsevier Breast Cancer Week	Elsevier webpage
TUESDAY 13 OCTOBER	Take a quiz and win an Elsevier E-book!	Elsevier quiz
WEDNESDAY 14 OCTOBER	"5 Reasons Why You Should be Talking About Breast Cancer" session with Dr. Ximena Alvirza (Elsevier)	Zoom
THURSDAY 15 OCTOBER	Find out about breast cancer signs and symptoms	Clinical content
FRIDAY 16 OCTOBER	Breast Cancer Awareness webinar with CoppaFeel! Announcement of Quiz winner!	Zoom

#BreastCancerAwarenessWeek




If you are interested in holding an online/ onsite session at your organization, feel free to contact your organization to align agendas. We are also more than happy to support you on different initiatives.

Q&A





ELSEVIER

Thank you

Do not hesitate to contact me for further questions

Koon W. Chan

Customer Success Manager Benelux, UK South & Ireland

ELSEVIER | Clinical Solutions

Mobile: +31 6 12400034

k.chan@elsevier.com

